



**Hazard
Management
Services**
SINCE 1984

AHERA THREE YEAR REINSPECTION

**Central California Conference of
Seventh-Day Adventists
Education Office
Clovis, CA**

September 24, 2014

**Survey
by**

**HAZARD MANAGEMENT SERVICES, INC.
371 E. Bullard, Suite 109
Fresno, CA 93710
(559) 436-0277
www.hazmanage.com**

HAZARD MANAGEMENT SERVICES, INC.

Central California Conference of 7th Day Adventists

Education Office

September 24, 2014

This report is broken into four main sections:

1. This Cover Letter, which is a brief summary of the suspect materials found during the inspection.
2. A Functional Space Notes (FSN) report, which is a room by room breakdown of all materials found during the inspection. The FSN is the report that is most useful for creating demolition or renovation specifications, or for notifying contractors who are working on site.
3. A Homogeneous Material Record (HMR), which is a material by material breakdown of all materials found during the inspection that are suspected to contain asbestos. This HMR satisfies the EPA's AHERA regulations for listing asbestos-containing materials. It can, also, be useful when planning renovation/demolition projects, especially those that will have all asbestos-containing materials removed.
4. The Form C Assessments are case by case assessments. This includes required response action options for all friable asbestos containing materials, all friable assumed (to contain asbestos) materials, and all Thermal System Insulation (TSI) found during the inspection. These assessments have response action dates that have been left blank. The Designated Person for your Local Education Agency (LEA) should place dates into these forms that are reasonable for the district to meet.

Also, included in this report, you will find HMS, Inc.'s Special Notes page concerning possible problems with drywall sampling and renovation/demolition projects, and a list of commonly used abbreviations that are found throughout the reports noted above.

This inspection was limited to the areas occupied by the Education Office and its employees. Other areas of this building were not inspected at this time; however, it is recommended that the CCCSDA consider inspection of the remainder of this building.

HAZARD MANAGEMENT SERVICES, INC.

Central California Conference of 7th Day Adventists

Education Office

September 24, 2014

At this site, Central California Seventh Day Adventist Education Office, all non-friable materials listed below were inspected and were found to be in good condition. These materials will remain non-friable as long as they are not sanded, drilled, cut or otherwise abused so that a powder is produced. Removal of these materials will require an asbestos abatement contractor, in most cases.

Baseboard, 4" Vinyl, grey — MISC — Assumed
with mastic

Carpet brown with glue — MISC — Assumed

Carpet It brown multi color — MISC — Assumed
with glue

Drywall with knockdown — MISC — Assumed
texture

Drywall with texture — MISC — Assumed
(orange peel)

Fiberboard — MISC — Assumed

The following non-friable thermal system insulation (TSI) materials were found at this site. Even though these materials are technically friable by definition, they may be treated as non-friable materials as long as they remain in an intact condition. A Form C and an evaluation sheet are included for these materials.

NONE

The following friable asbestos-containing materials were noted at this site. Friable materials are those that can release asbestos fibers with a minimum of contact or disturbance. Friable asbestos-containing materials can only be handled by an asbestos abatement contractor. Evaluation sheets and Form Cs are provided for the materials listed.

NONE

See "Special Notes" section concerning drywall sampling and renovations/demolitions. This page contains valuable information which must be considered before any alterations, modernization, renovations or demolitions occur.

Following the "Special Notes" and "Abbreviations" pages you will find the "Homogeneous Materials Record (HMR)". The HMR lists each suspect material (asbestos-containing or not), sample numbers, the location of the material in each building, the percent asbestos of each suspect material, the approximate square footage of each material in these locations and the friability of the material. When you use the HMR sheets you can pick a material and then go through the list and note every location where that material is located.

All materials not identified in this report that are discovered at the site must be assumed to contain asbestos until sampled and proven otherwise. Although there may be materials that have been excluded from the AHERA Management Plan by a letter stating it is non-asbestos-containing, the EPA's "National Emission Standards for Hazardous Air Pollutants (NESHAP)" does not allow for materials to be considered non-asbestos through the use of written documentation. This makes it necessary to bulk sample materials to prove they are non-asbestos-containing prior to renovations, demolitions and modernizations, no matter when they were installed.

Be sure to add this report to your management plan at the facilities office.

Date Printed: 10/10/2014

Functional Space Notes

HAZARD MANAGEMENT SERVICES, INC.

Client: Central California Conference of 7th Day Adventist **Site:** Central California Seventh Day Advenist Ed Office
HMS Project Number: F4031R **Date of Inspection:** September 24, 2014

Materials		Material Class	Percent Asbestos	Hmgns Matrl #	Sampled Here?	Footage Sq/Ln/Jnts	Friable? Yes/No
Building: <u>Education Offices</u>		Room: <u>Attic - 33 x 40 x 5</u>					
Floor:	2'x2' FCP with medium fissures	MISC	None Detected	1		1320 sq	
Walls:	Concrete Masonry Unit	NON	Non-Suspect				
Ceiling:	Concrete	NON	Non-Suspect				
Ducts:	Fiberglass	NON	Non-Suspect				
Beams:	Metal	NON	Non-Suspect				
Pipes:	Metal	NON	Non-Suspect				
<i>Comment: Uninsulated</i>							
<i>Room Plenum above drop-in ceiling panels</i>							
<i>Comments:</i>							
Building: <u>Education Offices</u>		Room: <u>Education Library - 20 x 20 x 9</u>					
Floor:	Carpet lt brown multi color with glue	MISC	Assumed	900		400 sq	No
Floor:	Concrete	NON	Non-Suspect				
Baseboard:	Baseboard, 4" Vinyl, grey with mastic	MISC	Assumed	906		7 ln	No
<i>Comment: At northeast corner</i>							
Baseboard:	Carpet brown with glue	MISC	Assumed	901		80 ln	No
<i>Comment: Used as a perimeter accent on all floors in all spaces.</i>							
Walls:	Drywall with knockdown texture	MISC	Assumed	903		720 sq	No
Ceiling:	2'x2' FCP with medium fissures	MISC	None Detected	1	1A	400 sq	
Building: <u>Education Offices</u>		Room: <u>Exterior</u>					
Walls:	Concrete Masonry Unit	NON	Non-Suspect				
Ground:	Concrete/dirt	NON	Non-Suspect				
Building: <u>Education Offices</u>		Room: <u>Hallway - 50 x 6 x 9</u>					
Floor:	Carpet lt brown multi color with glue	MISC	Assumed	900		300 sq	No
Floor:	Concrete	NON	Non-Suspect				
Baseboard:	Carpet brown with glue	MISC	Assumed	901		112 ln	No
<i>Comment: Used as a perimeter accent on all floors in all spaces.</i>							
Walls:	Drywall with texture (orange peel)	MISC	Assumed	902		810 sq	No
Ceiling:	2'x2' FCP with medium fissures	MISC	None Detected	1	1B	300 sq	
Wall:	Fiberboard	MISC	Assumed	904		54 sq	No

Functional Space Notes

HAZARD MANAGEMENT SERVICES, INC.

Client: Central California Conference of 7th Day Adventist

Site: Central California Seventh Day Advenist Ed Office

HMS Project Number: F4031R

Date of Inspection: September 24, 2014

Materials		Material Class	Percent Asbestos	Hmgns Matrl #	Sampled Here?	Footage Sq/Ln/Jnts	Friable? Yes/No
Building: <u>Education Offices</u>		Room: <u>Office 1 - 22 x 15 x 9</u>					
Floor:	Carpet lt brown multi color with glue	MISC	Assumed	900		330 sq	No
Floor:	Concrete	NON	Non-Suspect				
Baseboard:	Carpet brown with glue	MISC	Assumed	901		74 ln	No
	<i>Comment: Used as a perimeter accent on all floors in all spaces.</i>						
Walls:	Drywall with texture (orange peel)	MISC	Assumed	902		386 sq	No
Ceiling:	2'x2' FCP with medium fissures	MISC	None Detected	1	1C	330 sq	
Wall:	Concrete Masonry Unit	NON	Non-Suspect				
	<i>Comment: North wall</i>						
Soffit:	Drywall with texture (orange peel)	MISC	Assumed	902		28 sq	No
	<i>Comment: North wall</i>						
Dividing wall:	Drywall with texture (orange peel)	MISC	Assumed	902		180 sq	No
Building: <u>Education Offices</u>		Room: <u>Office 2 - 11 x 15 x 9</u>					
Floor:	Carpet lt brown multi color with glue	MISC	Assumed	900		165 sq	No
Floor:	Concrete	NON	Non-Suspect				
Baseboard:	Carpet brown with glue	MISC	Assumed	901		52 ln	No
	<i>Comment: Used as a perimeter accent on all floors in all spaces.</i>						
Walls:	Drywall with texture (orange peel)	MISC	Assumed	902		468 sq	No
Ceiling:	2'x2' FCP with medium fissures	MISC	None Detected	1		165 sq	
Wall:	Concrete Masonry Unit	NON	Non-Suspect				
	<i>Comment: East wall</i>						
Building: <u>Education Offices</u>		Room: <u>Office 3 - 20 x 15 x 9</u>					
Floor:	Carpet lt brown multi color with glue	MISC	Assumed	900		300 sq	No
	<i>Comment: CMU assumed behind drywall on east and north wall</i>						
Floor:	Concrete	NON	Non-Suspect				
Baseboard:	Carpet brown with glue	MISC	Assumed	901		70 ln	No
	<i>Comment: Used as a perimeter accent on all floors in all spaces.</i>						
Walls:	Drywall with texture (orange peel)	MISC	Assumed	902		630 sq	No
Ceiling:	2'x2' FCP with medium fissures	MISC	None Detected	1		300 sq	
Wall:	Concrete Masonry Unit	NON	Non-Suspect				
	<i>Comment: Assumed under drywall on east and north wall</i>						

Functional Space Notes

HAZARD MANAGEMENT SERVICES, INC.

Client: Central California Conference of 7th Day Adventist

Site: Central California Seventh Day Advenist Ed Office

HMS Project Number: F4031R

Date of Inspection: September 24, 2014

Materials		Material Class	Percent Asbestos	Hmgns Matrl #	Sampled Here?	Footage Sq/Ln/Jnts	Friable? Yes/No
Building: <u>Education Offices</u>		Room: <u>Office 4 - 10 x 16 x 9</u>					
Floor:	Carpet lt brown multi color with glue	MISC	Assumed	900		160 sq	No
Floor:	Concrete	NON	Non-Suspect				
Baseboard:	Carpet brown with glue	MISC	Assumed	901		52 ln	No
	<i>Comment: Used as a perimeter accent on all floors in all spaces.</i>						
Walls:	Drywall with texture (orange peel)	MISC	Assumed	902		351 sq	No
Ceiling:	2'x2' FCP with medium fissures	MISC	None Detected	1		160 sq	
Wall:	Concrete Masonry Unit	NON	Non-Suspect				
	<i>Comment: North wall</i>						
Building: <u>Education Offices</u>		Room: <u>Office 5 - 10 x 16 x 9</u>					
Floor:	Carpet lt brown multi color with glue	MISC	Assumed	900		160 sq	No
Floor:	Concrete	NON	Non-Suspect				
Baseboard:	Carpet brown with glue	MISC	Assumed	901		52 ln	No
	<i>Comment: Used as a perimeter accent on all floors in all spaces.</i>						
Walls:	Drywall with texture (orange peel)	MISC	Assumed	902		351 sq	No
Ceiling:	2'x2' FCP with medium fissures	MISC	None Detected	1		160 sq	
Wall:	Concrete Masonry Unit	NON	Non-Suspect				
	<i>Comment: North wall</i>						

HAZARD MANAGEMENT SERVICES, INC.

Abbreviations

The following list includes most of the abbreviations you may find within this report.

<u>ACT:</u>	Acoustic Ceiling/Wall Tile
<u>B-I-I:</u>	Blown-In-Insulation
<u>BLR:</u>	Boiler
<u>C'Ing</u>	Ceiling
<u>Carp:</u>	Carpet
<u>Carp&Mast</u>	Carpet and Mastic
<u>Bsbrd&Glue</u>	Baseboard and Glue
<u>DIP:</u>	Drop In Panel
<u>DIT:</u>	Drop In Tile
<u>FCP:</u>	False Ceiling Panel
<u>FRP:</u>	Fiberglass Reinforced Plastic
<u>FG:</u>	Fiberglass
<u>HMR #:</u>	Homogeneous Material Number
<u>HTR:</u>	Heater
<u>LINO:</u>	Linoleum
<u>MISC</u>	Miscellaneous
<u>PW:</u>	Pipe Wrap
<u>S-O-C:</u>	Sprayed-On Ceiling
<u>SOFP:</u>	Sprayed on Fire Proofing
<u>S-O-W:</u>	Sprayed-On Wall
<u>SURF:</u>	Surfacing
<u>T-O-C:</u>	Troweled-On Ceiling
<u>T-O-W:</u>	Troweled-On Wall
<u>TSI:</u>	Thermal System Insulation
<u>VFT:</u>	Vinyl Floor Tile
<u>W & C:</u>	Walls and Ceilings

HAZARD MANAGEMENT SERVICES, INC.

Special Notes

SPECIAL NOTE NO. 1 - DRYWALL/SHEETROCK

Drywall and its components continue to present problems both for our clients and for us. The inconsistency of sample results indicates that even the EPA/AHERA method for sampling drywall is inadequate. Although three to fifteen or more drywall samples may have been collected at your site(s), the results may not be representative of what is present. Asbestos sometimes is found in the drywall itself, in its tape and/or joint compound or in the final texture coat applied to finish the appearance. It can be found in any combination in these materials. It can also be found in patching materials used to repair damaged drywall. Paint added to otherwise non-homogeneous materials can also produce inappropriate assumptions that all materials are the same.

To account for the variability in drywall construction we strongly advise that any substantial renovation project involving drywall be preceded by a comprehensive evaluation of the materials designated for handling.

SPECIAL NOTE NO. 2 - RENOVATIONS/DEMOLITIONS

Please be aware that many possible asbestos-containing materials were specifically exempted from inspection and identification by the AHERA sampling protocol. These exempted materials included roofing materials, most exterior plasters, exterior window putty, exterior transite panels and shingles, some exterior thermal system insulation and a few other materials. AHERA also exempted heat resistant counter tops and transite blackboards and a few other materials found inside of buildings.

While these materials are exempted by AHERA, they are not exempted by Cal/OSHA or EPA's regulation in its "National Emission Standards for Hazardous Air Pollutants" (NESHAP). Therefore, any renovation activity involving these materials must be preceded by a sampling project to identify asbestos-containing materials which may be regulated by these agencies or the local Air Pollution Control District. You cannot rely on your AHERA reports to identify all of these additional materials.

SPECIAL NOTE NO. 3 - NEW MATERIALS AND BUILDINGS

Materials installed since the previous inspection must be certified, in writing, as non-asbestos containing materials, sampled to test for asbestos content, or assumed to contain asbestos. This certification must be from the product manufacturer or the construction engineer on the project during which the new materials were installed. This certification must be placed in your management plan.

Buildings installed (portables) or constructed since October 12, 1988 must be certified to be asbestos-containing building material (ACBMs) free by the manufacturer (portables), architect or construction engineer, or they must be inspected for ACBMs. This certification must be placed in the management plan for the site at which the new building was installed or constructed.

New sites, built after October 12, 1988, require a Management Plan. If ACBM free certification letters are obtainable for all buildings at the new site, no inspection is required, although a Management Plan must still be written.

SPECIAL NOTE NO. 4 - Materials Containing Trace Amounts of Asbestos

Materials containing trace amounts of asbestos are not covered by the AHERA regulations as the EPA does not consider them to be asbestos-containing materials. However, Cal/OSHA does consider materials containing trace amounts of asbestos (down to 0.1%) to be asbestos-containing, and any level of asbestos in a material must be considered a potential exposure hazard.

Materials listed as containing trace amounts of asbestos require special handling procedures - per Cal/OSHA and training for the employees working with these materials. Waste materials containing less than 1% asbestos must be "point counted" or handled as a hazardous waste.

Homogeneous Material Records

HAZARD MANAGEMENT SERVICES, INC.

Client: Central California Conference of 7th Day Adventist

Site: Central California 7th Day Advenist Education Ofc.

Project #: F4031R

Building: Education Offices

Inspection Date: 9/24/2014

Material	Class	HMR	Sample Number(s)	Location	% Asbestos	Footage	Friable
2'x2' FCP with medium fissures	MISC	1	HMS-SDA-EDOF-F4031R-1A, 1B, 1C	Attic Plenum above drop-in ceiling panels - Floor	None Detected	1320 Square	Yes
2'x2' FCP with medium fissures	MISC	1	HMS-SDA-EDOF-F4031R-1A, 1B, 1C	Education Library - Ceiling	None Detected	400 Square	No
2'x2' FCP with medium fissures	MISC	1	HMS-SDA-EDOF-F4031R-1A, 1B, 1C	Hallway - Ceiling	None Detected	300 Square	No
2'x2' FCP with medium fissures	MISC	1	HMS-SDA-EDOF-F4031R-1A, 1B, 1C	Office 1 - Ceiling	None Detected	330 Square	No
2'x2' FCP with medium fissures	MISC	1	HMS-SDA-EDOF-F4031R-1A, 1B, 1C	Office 2 - Ceiling	None Detected	165 Square	No
2'x2' FCP with medium fissures	MISC	1	HMS-SDA-EDOF-F4031R-1A, 1B, 1C	Office 3 - Ceiling	None Detected	300 Square	No
2'x2' FCP with medium fissures	MISC	1	HMS-SDA-EDOF-F4031R-1A, 1B, 1C	Office 4 - Ceiling	None Detected	160 Square	No
2'x2' FCP with medium fissures	MISC	1	HMS-SDA-EDOF-F4031R-1A, 1B, 1C	Office 5 - Ceiling	None Detected	160 Square	No
Carpet lt brown multi color with glue	MISC	900	NOT SAMPLED	Education Library - Floor	Assumed	400 Square	No
Carpet lt brown multi color with glue	MISC	900	NOT SAMPLED	Hallway - Floor	Assumed	300 Square	No
Carpet lt brown multi color with glue	MISC	900	NOT SAMPLED	Office 1 - Floor	Assumed	330 Square	No
Carpet lt brown multi color with glue	MISC	900	NOT SAMPLED	Office 2 - Floor	Assumed	165 Square	No
Carpet lt brown multi color with glue	MISC	900	NOT SAMPLED	Office 3 - Floor CMU assumed behind drywall on east and north wall	Assumed	300 Square	No

Homogeneous Material Records

HAZARD MANAGEMENT SERVICES, INC.

Client: Central California Conference of 7th Day Adventist

Site: Central California 7th Day Advenist Education Ofc.

Project #: F4031R

Building: Education Offices

Inspection Date: 9/24/2014

Material	Class	HMR	Sample Number(s)	Location	% Asbestos	Footage	Friable
Carpet lt brown multi color with glue	MISC	900	NOT SAMPLED	Office 4 - Floor	Assumed	160 Square	No
Carpet lt brown multi color with glue	MISC	900	NOT SAMPLED	Office 5 - Floor	Assumed	160 Square	No
Carpet brown with glue	MISC	901	NOT SAMPLED	Education Library - Baseboard	Assumed	80 Linear	No
Carpet brown with glue	MISC	901	NOT SAMPLED	Hallway - Baseboard	Assumed	112 Linear	No
Carpet brown with glue	MISC	901	NOT SAMPLED	Office 1 - Baseboard	Assumed	74 Linear	No
Carpet brown with glue	MISC	901	NOT SAMPLED	Office 2 - Baseboard	Assumed	52 Linear	No
Carpet brown with glue	MISC	901	NOT SAMPLED	Office 3 - Baseboard	Assumed	70 Linear	No
Carpet brown with glue	MISC	901	NOT SAMPLED	Office 4 - Baseboard	Assumed	52 Linear	No
Carpet brown with glue	MISC	901	NOT SAMPLED	Office 5 - Baseboard	Assumed	52 Linear	No
Drywall with texture (orange peel)	MISC	902	NOT SAMPLED	Hallway - Walls	Assumed	810 Square	No
Drywall with texture (orange peel)	MISC	902	NOT SAMPLED	Office 1 - Walls/Soffit/Dividing wall	Assumed	594 Square	No
Drywall with texture (orange peel)	MISC	902	NOT SAMPLED	Office 2 - Walls	Assumed	468 Square	No
Drywall with texture (orange peel)	MISC	902	NOT SAMPLED	Office 3 - Walls	Assumed	630 Square	No
Drywall with texture (orange peel)	MISC	902	NOT SAMPLED	Office 4 - Walls	Assumed	351 Square	No

Homogeneous Material Records

HAZARD MANAGEMENT SERVICES, INC.

Client: Central California Conference of 7th Day Adventist

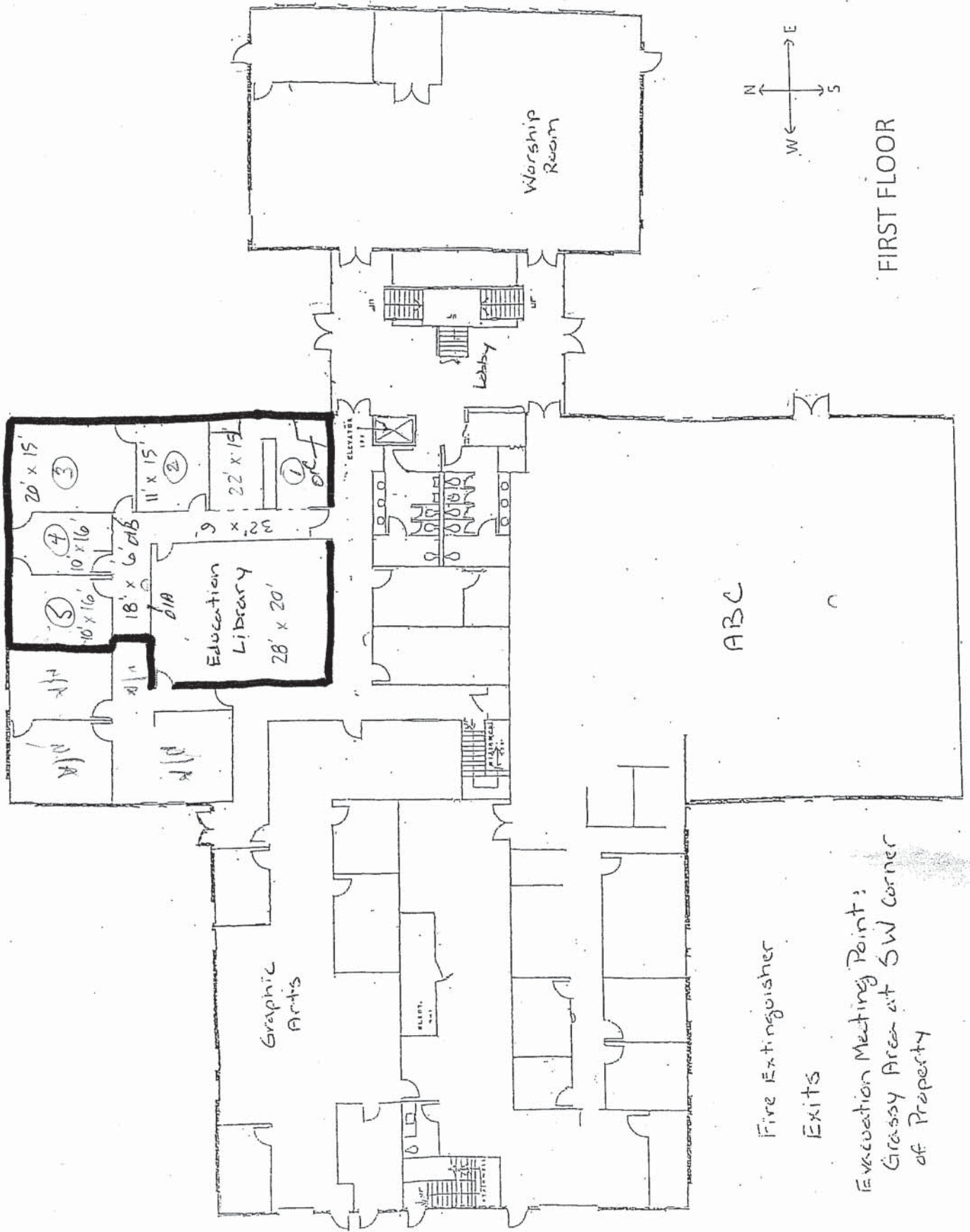
Site: Central California 7th Day Advenist Education Ofc.

Project #: F4031R

Building: Education Offices

Inspection Date: 9/24/2014

Material	Class	HMR	Sample Number(s)	Location	% Asbestos	Footage	Friable
Drywall with texture (orange peel)	MISC	902	NOT SAMPLED	Office 5 - Walls	Assumed	351 Square	No
Drywall with knockdown texture	MISC	903	NOT SAMPLED	Education Library - Walls	Assumed	720 Square	No
Fiberboard	MISC	904	NOT SAMPLED	Hallway - Wall	Assumed	54 Square	No
Baseboard, 4" Vinyl, grey with mastic	MISC	906	NOT SAMPLED	Education Library - Baseboard At northeast corner	Assumed	7 Linear	No
Concrete	NON	0	NOT SAMPLED	Various Locations Plenum above drop-in ceiling panels	Non-Suspect		
Concrete Masonry Unit	NON	0	NOT SAMPLED	Various Locations Plenum above drop-in ceiling panels	Non-Suspect		
Concrete/dirt	NON	0	NOT SAMPLED	Exterior - Ground	Non-Suspect		No
Fiberglass	NON	0	NOT SAMPLED	Attic Plenum above drop-in ceiling panels - Ducts	Non-Suspect		No
Metal	NON	0	NOT SAMPLED	Attic Plenum above drop-in ceiling panels - Beams/Pipes	Non-Suspect	0	No



FIRST FLOOR

Fire Extinguisher

Exits

Evacuation Meeting Point:
Grassy Area at SW corner
of Property

**ASBESTOS HAZARD EMERGENCY RESPONSE ACT (AHERA)
GENERAL DATA
(FORM A)**

Inspection Date: September 24, 2014

LOCAL EDUCATION AGENCY					COUNTY	
Central California Conference of 7th Day Adventist					Fresno	
SCHOOL NAME					SCHOOL PHONE NUMBER	
Central CA 7th Day Adventist Education Ofc.					(559) 347 - 2000	
ADDRESS		(Number)	(Street)	(City)	(State)	(Zip)
2820 Willow Avenue				Clovis	CA	93612
CDS CODE*	SCHOOL ENROLLMENT*		NO. SCHOOL EMPLOYEES*		NO. BUILDINGS AT SCHOOL	
	0		0		1	

LEA AHERA DESIGNEE

NAME				PHONE NUMBER		
Todd Paige				(559) 347 - 3121		
ADDRESS		(Number)	(Street)	(City)	(State)	(Zip)
2820 Willow Ave				Clovis	CA	93612
TRAINING COURSE(S) AND DATE(S)						
Hazard Management Services, Inc.						
				TOTAL TRAINING HOURS		
				6		


MANAGEMENT PLANNER

NAME				PHONE NUMBER		
Harry Stevens				(559) 436 - 0277		
ADDRESS		(Number)	(Street)	(City)	(State)	(Zip)
371 E. Bullard Ave. Suite 109				Fresno	CA	93710-5217
ACCREDITATION NUMBER		TRAINING AGENCY				
MP-R-69-14		Wangerin Environmental				

DOCUMENTS ATTACHED (CHECK APPROPRIATE BOXES)

<input checked="" type="checkbox"/> Record of Friable and Non-Friable ACBM (Form B)	<input checked="" type="checkbox"/> Physical and Hazard Assessment of Friable ACBM or Friable Assumed ACBM (Form C)	<input type="checkbox"/> Operations and Maintenance Program	<input type="checkbox"/> Periodic Surveillance Plan
<input type="checkbox"/> Reinspection Plan (Form F)	<input type="checkbox"/> Parent/Employee Notification	<input type="checkbox"/> Resources Needed (Form H)	

We certify that the general Local Education Agency (LEA) responsibilities, as stipulated by 40 CFR Part 763, have been met or will be met and that this Management Plan includes all buildings at this school.

MANAGEMENT PLANNER SIGNATURE	DATE
	10-13-14
LEA DESIGNEE SIGNATURE	DATE
LEA SUPERINTENDENT SIGNATURE	DATE

Date Printed: 10/13/2014

RECORD OF FRIABLE AND NONFRIABLE ACM (FORM B)

Inspection Date: September 24, 2014

					CDS CODE	
SCHOOL					SCHOOL PHONE NUMBER	
Central CA 7th Day Adventist Education Ofc.					(559) 347 - 2000	
ADDRESS	(Number)	(Street)	(City)	(State)	(Zip)	
2820 Willow Avenue			Clovis	CA	93612	

- IMPORTANT -

Each building and functional space with friable ACBM or friable assumed ACBM listed on this form requires completion of FORM C (PHYSICAL AND HAZARD ASSESSMENT OF FRIABLE ACBM OR FRIABLE ASSUMED ACBM). Indicate location of material on blueprint, diagram or narrative in square or linear feet, and attach a copy (Sec. 763.93).

LINE	BUILDING NAME & FUNCTIONAL SPACE <i>(Indicate Address if Different From Above)</i>	CHECK ONE			CHECK ONE			
		SUR-FACING	TSI	MISC	ACBM		ASSUMED ACBM	
					FRIABLE	NON-FRIABLE	FRIABLE	NON-FRIABLE
1.	Education Offices - Carpet lt brown multi color with glue			X				X
2.	Education Offices - Carpet brown with glue			X				X
3.	Education Offices - Drywall with texture (orange peel)			X				X
4.	Education Offices - Drywall with knockdown texture			X				X
5.	Education Offices - Fiberboard			X				X
6.	Education Offices - Baseboard, 4" Vinyl, grey with mastic			X				X

See attached 'Homogeneous Materials Records' for all materials and their locations by building. On Form B all buildings are listed, and a summary of all non-friable and friable materials is provided. Friable materials and their locations are listed separately under each building on Form B.

Date Printed: 10/13/2014

HAZARD MANAGEMENT SERVICES, INC.

PHYSICAL AND HAZARD ASSESSMENT OF FRIABLE ACBM OR FRIABLE ASSUMED ACBM (SEC. 763.93) (FORM C)

DISTRICT	Central California Conference of 7th Day Adventist	CDS CODE
SCHOOL	Central CA 7th Day Adventist Education Ofc.	SCHOOL PHONE NUMBER (559) 347 - 2000
ADDRESS	2820 Willow Avenue Clovis, CA 93612	
BUILDING NAME		INSPECTION DATE September 24, 2014
FUNCTIONAL SPACE		LINE NO. FROM FORM B

TYPE OF FRIABLE ACBM

1. CONDITION OF ACBM (Overall Rating)

2. POTENTIAL FOR DISTURBANCE (Overall Rating)

3. HAZARD ASSESSMENT (Combine Ratings From Items 1 and 2 and Check Appropriate Box)

CONDITION OF ACBM	POTENTIAL FOR DISTURBANCE		
	LOW	MODERATE	HIGH
GOOD	1	2	3
DAMAGED	4	5	6
SIGNIFICANTLY DAMAGED	7	7	7

4. RECOMMENDED RESPONSE ACTION(S) AND COST(S)

RESPONSE ACTION	ESTIMATED COSTS
<input type="checkbox"/> A. OPERATION AND MAINTENANCE	\$
<input type="checkbox"/> B. REPAIR	\$
<input type="checkbox"/> C. ENCAPSULATION	\$
<input type="checkbox"/> D. ENCLOSURE	\$
<input type="checkbox"/> E. REMOVAL	\$
Total Cost	\$

5. NARRATIVE OF RECOMMENDED RESPONSE

(Attach Additional Sheets If Necessary)

SCHEDULE

START

FINISH

Comments:

NO RESPONSE ACTION NECESSARY.

Six Month Surveillance Summary

District: Central California Conference of 7th
Day Adventist

Date:

School: Central California Seventh Day
Adventist Ed Office

Inspector:

Building	HMR Number	Asbestos Material	Location	Condition Code/Comments
Education Offices	900	Carpet lt brown multi color with glue	Education Library, Hallway, Office 1, Office 2, Office 3, Office 4, Office 5	
Education Offices	901	Carpet brown with glue	Education Library, Hallway, Office 1, Office 2, Office 3, Office 4, Office 5	
Education Offices	902	Drywall with texture (orange peel)	Hallway, Office 1, Office 2, Office 3, Office 4, Office 5	
Education Offices	903	Drywall with knockdown texture	Education Library	
Education Offices	904	Fiberboard	Hallway	
Education Offices	906	Baseboard, 4" Vinyl, grey with mastic	Education Library	

Condition Codes

General Condition: (1) Good (2) Damaged (3) Significantly Damaged (Damaged 25% or more)
 Change in Condition: (4) No (5) Yes (If yes, explain under comments)
 Abated: (6) Repaired (7) Removed (8) Encapsulated (9) Enclosed (10) Isolated & Restricted
 Misc: (11) Inaccessible, No surveillance data (12) Other (Explain under comments)



Bulk Asbestos Analysis

(EPA Method 600/R-93-116, Visual Area Estimation)

Hazard Mgmt Svcs-Fresno/Bakersfield
Harry Stevens
Fresno Location
371 E. Bullard Ave., Ste. 109
Fresno, CA 93710

Client ID: 1636
Report Number: B196287
Date Received: 09/25/14
Date Analyzed: 09/25/14
Date Printed: 09/25/14
First Reported: 09/25/14

Job ID/Site: F4031R - Central California Conference of 7th Day Adventist, Central California
Conference of 7th Day Adventist Education Ofc.
Date(s) Collected: 09/24/2014

FALI Job ID: 1636
Total Samples Submitted: 3
Total Samples Analyzed: 3

Sample ID	Lab Number	Asbestos Type	Percent in Layer	Asbestos Type	Percent in Layer	Asbestos Type	Percent in Layer
-----------	------------	---------------	------------------	---------------	------------------	---------------	------------------

HMS-SDA-EDOF-F4031R-1A

11564188

Layer: Beige Fibrous Material

ND

Layer: Paint

ND

Total Composite Values of Fibrous Components: **Asbestos (ND)**

Cellulose (40 %) Fibrous Glass (40 %)

HMS-SDA-EDOF-F4031R-1B

11564189

Layer: Beige Fibrous Material

ND

Layer: Paint

ND

Total Composite Values of Fibrous Components: **Asbestos (ND)**

Cellulose (40 %) Fibrous Glass (40 %)

HMS-SDA-EDOF-F4031R-1C

11564190

Layer: Beige Fibrous Material

ND

Layer: Paint

ND

Total Composite Values of Fibrous Components: **Asbestos (ND)**

Cellulose (40 %) Fibrous Glass (40 %)

Tad Thrower, Laboratory Supervisor, Hayward Laboratory

Note: Limit of Quantification ('LOQ') = 1%. 'Trace' denotes the presence of asbestos below the LOQ. 'ND' = 'None Detected'.

Analytical results and reports are generated by Forensic Analytical Laboratories Inc. (FALI) at the request of and for the exclusive use of the person or entity (client) named on such report. Results, reports or copies of same will not be released by FALI to any third party without prior written request from client. This report applies only to the sample(s) tested. Supporting laboratory documentation is available upon request. This report must not be reproduced except in full, unless approved by FALI. The client is solely responsible for the use and interpretation of test results and reports requested from FALI. Forensic Analytical Laboratories Inc. is not able to assess the degree of hazard resulting from materials analyzed. FALI reserves the right to dispose of all samples after a period of thirty (30) days, according to all state and federal guidelines, unless otherwise specified. All samples were received in acceptable condition unless otherwise noted.

BULK Material Analysis Request Form

Hazard Management Services, Inc.

Fresno

371 E. Bullard Ave. Suite 109

Fresno, CA 93710-5217

(559) 436 - 0277

FAX: (559) 436 - 0279

Date Submitted: 09/24/14

Contact: Harry Stevens

Collected By: Harry Stevens

Date(s) Collected: 09/24/14

Job ID: Central California Conference of 7th Day Adventist

Job Site: Central California 7th Day Adventist Education Ofc.

Analysis Requested: **PLM with Dispersion Staining**

Turn Around Time: **24 HR**

Laboratory: Forensic Analytical, Inc.

Special Instructions: Please email hstevens@hazmanage.com with results, thanks.

Project ID / Job No: F4031R

Bill to: Hazard Management Services, Inc.

Sample ID	Material Description / Location
HMS-SDA-EDOF-F4031R-1A	2'x2' drop-in ceiling panels Education Offices, Education Library, East side center
HMS-SDA-EDOF-F4031R-1B	2'x2' drop-in ceiling panels Education Offices, Hallway, Southeast corner
HMS-SDA-EDOF-F4031R-1C	2'x2' drop-in ceiling panels Education Offices, Office 1, East side at north soffit

Submitted By:

[Signature]

Date Submitted:

9/24/14

Submitted Via:

Fed Ex

Received By:

[Signature]

Date Received:

1/1

Received Via:

Up

09-25-14A10:47 RCVD

Date Printed: 9/24/2014