

ASBESTOS HAZARD EMERGENCY RESPONSE ACT (AHERA)  
GENERAL DATA  
(FORM A)

Inspection Date: September 24, 2014

LOCAL EDUCATION AGENCY				COUNTY	
Central California Conference of 7th Day Adventist				Fresno	
SCHOOL NAME				SCHOOL PHONE NUMBER	
Central CA 7th Day Adventist Education Ofc				(559) 347 - 2000	
ADDRESS (Number)		(Street)	(City)	(State)	(Zip)
2820 Willow Avenue			Clovis	CA	93612
CDS CODE*	SCHOOL ENROLLMENT*	NO. SCHOOL EMPLOYEES*		NO. BUILDINGS AT SCHOOL	
	0	86		1	

LEA AHERA DESIGNEE

NAME				PHONE NUMBER	
Todd Paige				(559) 347 - 3121	
ADDRESS (Number)		(Street)	(City)	(State)	(Zip)
2820 Willow Ave			Clovis	CA	93612
TRAINING COURSE(S) AND DATE(S)					
Hazard Management Services, Inc.					

TOTAL TRAINING HOURS

6

MANAGEMENT PLANNER

NAME				PHONE NUMBER	
Harry Stevens				(559) 436 - 0277	
ADDRESS (Number)		(Street)	(City)	(State)	(Zip)
371 E Bullard Ave. Suite 109			Fresno	CA	93710-5217
ACCREDITATION NUMBER		TRAINING AGENCY			
MP-R-69-14		Wangerin Environmental			

DOCUMENTS ATTACHED (CHECK APPROPRIATE BOXES)

<input checked="" type="checkbox"/> Record of Friable and Non-Friable ACM (Form B)	<input checked="" type="checkbox"/> Physical and Hazard Assessment of Friable ACM or Friable Assumed ACM (Form C)	<input type="checkbox"/> Operations and Maintenance Program	<input type="checkbox"/> Periodic Surveillance Plan
<input type="checkbox"/> Reinspection Plan (Form F)	<input type="checkbox"/> Parent/Employee Notification	<input type="checkbox"/> Resources Needed (Form H)	

We certify that the general Local Education Agency (LEA) responsibilities, as stipulated by 40 CFR Part 763, have been met or will be met and that this Management Plan includes all buildings at this school.

MANAGEMENT PLANNER SIGNATURE	DATE
<i>Harry Stevens</i>	10-13-14
LEA DESIGNEE SIGNATURE	DATE
<i>Todd A. Paige</i>	10-14-2014
LEA SUPERINTENDENT SIGNATURE	DATE
<i>David P. Durham</i>	10-14-2014

Date Printed: 10/13/2014

# ***HAZARD MANAGEMENT SERVICES, INC.***

## **Central California Conference of 7th Day Adventists**

### **Education Office**

**September 24, 2014**

This report is broken into four main sections:

1. This Cover Letter, which is a brief summary of the suspect materials found during the inspection.
2. A Functional Space Notes (FSN) report, which is a room by room breakdown of all materials found during the inspection. The FSN is the report that is most useful for creating demolition or renovation specifications, or for notifying contractors who are working on site.
3. A Homogeneous Material Record (HMR), which is a material by material breakdown of all materials found during the inspection that are suspected to contain asbestos. This HMR satisfies the EPA's AHERA regulations for listing asbestos-containing materials. It can, also, be useful when planning renovation/demolition projects, especially those that will have all asbestos-containing materials removed.
4. The Form C Assessments are case by case assessments. This includes required response action options for all friable asbestos containing materials, all friable assumed (to contain asbestos) materials, and all Thermal System Insulation (TSI) found during the inspection. These assessments have response action dates that have been left blank. The Designated Person for your Local Education Agency (LEA) should place dates into these forms that are reasonable for the district to meet.

Also, included in this report, you will find HMS, Inc.'s Special Notes page concerning possible problems with drywall sampling and renovation/demolition projects, and a list of commonly used abbreviations that are found throughout the reports noted above.

This inspection was limited to the areas occupied by the Education Office and its employees. Other areas of this building were not inspected at this time; however, it is recommended that the CCCSDA consider inspection of the remainder of this building.

# **HAZARD MANAGEMENT SERVICES, INC.**

## **Central California Conference of 7th Day Adventists**

### **Education Office**

**September 24, 2014**

At this site, Central California Seventh Day Adventist Education Office, all non-friable materials listed below were inspected and were found to be in good condition. These materials will remain non-friable as long as they are not sanded, drilled, cut or otherwise abused so that a powder is produced. Removal of these materials will require an asbestos abatement contractor, in most cases.

Baseboard, 4" Vinyl, grey — MISC — Assumed  
with mastic

Carpet brown with glue — MISC — Assumed

Carpet lt brown multi color — MISC — Assumed  
with glue

Drywall with knockdown — MISC — Assumed  
texture

Drywall with texture — MISC — Assumed  
(orange peel)

Fiberboard — MISC — Assumed

The following non-friable thermal system insulation (TSI) materials were found at this site. Even though these materials are technically friable by definition, they may be treated as non-friable materials as long as they remain in an intact condition. A Form C and an evaluation sheet are included for these materials.

NONE

The following friable asbestos-containing materials were noted at this site. Friable materials are those that can release asbestos fibers with a minimum of contact or disturbance. Friable asbestos-containing materials can only be handled by an asbestos abatement contractor. Evaluation sheets and Form Cs are provided for the materials listed.

NONE

See "Special Notes" section concerning drywall sampling and renovations/demolitions. This page contains valuable information which must be considered before any alterations, modernization, renovations or demolitions occur.

Following the "Special Notes" and "Abbreviations" pages you will find the "Homogeneous Materials Record (HMR)". The HMR lists each suspect material (asbestos-containing or not), sample numbers, the location of the material in each building, the percent asbestos of each suspect material, the approximate square footage of each material in these locations and the friability of the material. When you use the HMR sheets you can pick a material and then go through the list and note every location where that material is located.

All materials not identified in this report that are discovered at the site must be assumed to contain asbestos until sampled and proven otherwise. Although there may be materials that have been excluded from the AHERA Management Plan by a letter stating it is non-asbestos-containing, the EPA's "National Emission Standards for Hazardous Air Pollutants (NESHAP)" does not allow for materials to be considered non-asbestos through the use of written documentation. This makes it necessary to bulk sample materials to prove they are non-asbestos-containing prior to renovations, demolitions and modernizations, no matter when they were installed.

**Be sure to add this report to your management plan at the facilities office.**

**Date Printed: 10/10/2014**

**RECORD OF FRIABLE AND NONFRIABLE ACM  
(FORM B)**

Inspection Date: September 24, 2014

					CDS CODE
SCHOOL					SCHOOL PHONE NUMBER
Central CA 7th Day Adventist Education Ofc.					(559) 347 - 2000
ADDRESS	(Number)	(Street)	(City)	(State)	(Zip)
2820 Willow Avenue			Clovis	CA	93612

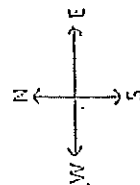
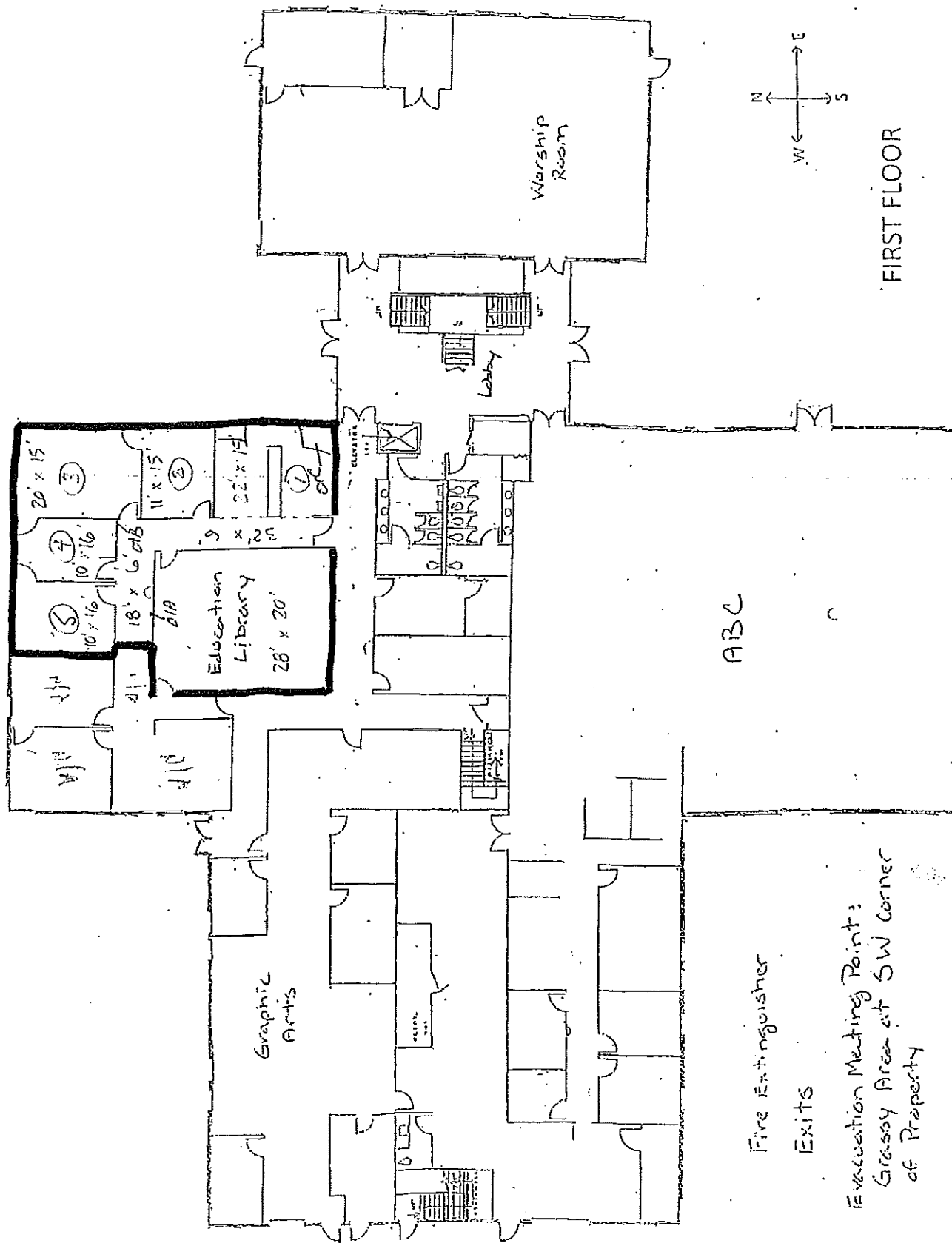
**- IMPORTANT -**

Each building and functional space with friable ACBM or friable assumed ACBM listed on this form requires completion of FORM C (PHYSICAL AND HAZARD ASSESSMENT OF FRIABLE ACBM OR FRIABLE ASSUMED ACBM). Indicate location of material on blueprint, diagram or narrative in square or linear feet, and attach a copy (Sec. 763.93).

LINE	BUILDING NAME & FUNCTIONAL SPACE (Indicate Address if Different From Above)	CHECK ONE			CHECK ONE			
		SUR-FACING	TSI	MISC	ACBM		ASSUMED ACBM	
					FRIABLE	NON-FRIABLE	FRIABLE	NON-FRIABLE
1.	Education Offices - Carpet lt brown multi color with glue			X				X
2.	Education Offices - Carpet brown with glue			X				X
3.	Education Offices - Drywall with texture (orange peel)			X				X
4.	Education Offices - Drywall with knockdown texture			X				X
5.	Education Offices - Fiberboard			X				X
6.	Education Offices - Baseboard, 4" Vinyl, grey with mastic			X				X

See attached 'Homogeneous Materials Records' for all materials and their locations by building. On Form B all buildings are listed, and a summary of all non-friable and friable materials is provided. Friable materials and their locations are listed separately under each building on Form B.

Date Printed: 10/13/2014



FIRST FLOOR

ABC

Fire Extinguisher

Exits

Evacuation Meeting Point:  
Grassy Area at SW corner  
of Property

# Functional Space Notes

## HAZARD MANAGEMENT SERVICES, INC.

Client: Central California Conference of 7th Day Adventist      Site: Central California Seventh Day Advenist Ed Office  
HMS Project Number: F4031R      Date of Inspection: September 24, 2014

Materials		Material Class	Percent Asbestos	Hmgns Matl #	Sampled Here?	Footage Sq/Ln/Jnts	Friable? Yes/No
<b>Building:</b> <u>Education Offices</u>		<b>Room:</b> <u>Attic - 33 x 40 x 5</u>					
<b>Floor:</b>	2'x2' FCP with medium fissures	MISC	None Detected	1		1320 sq	
<b>Walls:</b>	Concrete Masonry Unit	NON	Non-Suspect				
<b>Ceiling:</b>	Concrete	NON	Non-Suspect				
<b>Ducts:</b>	Fiberglass	NON	Non-Suspect				
<b>Beams:</b>	Metal	NON	Non-Suspect				
<b>Pipes:</b>	Metal	NON	Non-Suspect				
<i>Comment: Uninsulated</i>							
<i>Room Comments: Plenum above drop-in ceiling panels</i>							
<b>Building:</b> <u>Education Offices</u>		<b>Room:</b> <u>Education Library - 20 x 20 x 9</u>					
<b>Floor:</b>	Carpet lt brown multi color with glue	MISC	Assumed	900		400 sq	No
<b>Floor:</b>	Concrete	NON	Non-Suspect				
<b>Baseboard:</b>	Baseboard, 4" Vinyl, grey with mastic	MISC	Assumed	906		7 ln	No
<i>Comment: At northeast corner</i>							
<b>Baseboard:</b>	Carpet brown with glue	MISC	Assumed	901		80 ln	No
<i>Comment: Used as a perimeter accent on all floors in all spaces.</i>							
<b>Walls:</b>	Drywall with knockdown texture	MISC	Assumed	903		720 sq	No
<b>Ceiling:</b>	2'x2' FCP with medium fissures	MISC	None Detected	1	1A	400 sq	
<b>Building:</b> <u>Education Offices</u>		<b>Room:</b> <u>Exterior</u>					
<b>Walls:</b>	Concrete Masonry Unit	NON	Non-Suspect				
<b>Ground:</b>	Concrete/dirt	NON	Non-Suspect				
<b>Building:</b> <u>Education Offices</u>		<b>Room:</b> <u>Hallway - 50 x 6 x 9</u>					
<b>Floor:</b>	Carpet lt brown multi color with glue	MISC	Assumed	900		300 sq	No
<b>Floor:</b>	Concrete	NON	Non-Suspect				
<b>Baseboard:</b>	Carpet brown with glue	MISC	Assumed	901		112 ln	No
<i>Comment: Used as a perimeter accent on all floors in all spaces.</i>							
<b>Walls:</b>	Drywall with texture (orange peel)	MISC	Assumed	902		810 sq	No
<b>Ceiling:</b>	2'x2' FCP with medium fissures	MISC	None Detected	1	1B	300 sq	
<b>Wall:</b>	Fiberboard	MISC	Assumed	904		54 sq	No

# ***Functional Space Notes***

## **HAZARD MANAGEMENT SERVICES, INC.**

**Client:** Central California Conference of 7th Day Adventist

**Site:** Central California Seventh Day Advenist Ed Office

**HMS Project Number:** F4031R

**Date of Inspection:** September 24, 2014

Materials	Material Class	Percent Asbestos	Hmgns Matrl #	Sampled Here?	Footage Sq/Ln/Jnts	Friable? Yes/No
<b>Building:</b> <u>Education Offices</u>		<b>Room:</b> <u>Office 1 - 22 x 15 x 9</u>				
<b>Floor:</b> Carpet lt brown multi color with glue	MISC	Assumed	900		330 sq	No
<b>Floor:</b> Concrete	NON	Non-Suspect				
<b>Baseboard:</b> Carpet brown with glue	MISC	Assumed	901		74 ln	No
<i>Comment: Used as a perimeter accent on all floors in all spaces.</i>						
<b>Walls:</b> Drywall with texture (orange peel)	MISC	Assumed	902		386 sq	No
<b>Ceiling:</b> 2'x2' FCP with medium fissures	MISC	None Detected	1	1C	330 sq	
<b>Wall:</b> Concrete Masonry Unit	NON	Non-Suspect				
<i>Comment: North wall</i>						
<b>Soffit:</b> Drywall with texture (orange peel)	MISC	Assumed	902		28 sq	No
<i>Comment: North wall</i>						
<b>Dividing wall:</b> Drywall with texture (orange peel)	MISC	Assumed	902		180 sq	No
<b>Building:</b> <u>Education Offices</u>		<b>Room:</b> <u>Office 2 - 11 x 15 x 9</u>				
<b>Floor:</b> Carpet lt brown multi color with glue	MISC	Assumed	900		165 sq	No
<b>Floor:</b> Concrete	NON	Non-Suspect				
<b>Baseboard:</b> Carpet brown with glue	MISC	Assumed	901		52 ln	No
<i>Comment: Used as a perimeter accent on all floors in all spaces.</i>						
<b>Walls:</b> Drywall with texture (orange peel)	MISC	Assumed	902		468 sq	No
<b>Ceiling:</b> 2'x2' FCP with medium fissures	MISC	None Detected	1		165 sq	
<b>Wall:</b> Concrete Masonry Unit	NON	Non-Suspect				
<i>Comment: East wall</i>						
<b>Building:</b> <u>Education Offices</u>		<b>Room:</b> <u>Office 3 - 20 x 15 x 9</u>				
<b>Floor:</b> Carpet lt brown multi color with glue	MISC	Assumed	900		300 sq	No
<i>Comment: CMU assumed behind drywall on east and north wall</i>						
<b>Floor:</b> Concrete	NON	Non-Suspect				
<b>Baseboard:</b> Carpet brown with glue	MISC	Assumed	901		70 ln	No
<i>Comment: Used as a perimeter accent on all floors in all spaces.</i>						
<b>Walls:</b> Drywall with texture (orange peel)	MISC	Assumed	902		630 sq	No
<b>Ceiling:</b> 2'x2' FCP with medium fissures	MISC	None Detected	1		300 sq	
<b>Wall:</b> Concrete Masonry Unit	NON	Non-Suspect				
<i>Comment: Assumed under drywall on east and north wall</i>						

# ***Functional Space Notes***

## **HAZARD MANAGEMENT SERVICES, INC.**

Client: Central California Conference of 7th Day Adventist      Site: Central California Seventh Day Advenist Ed Office  
HMS Project Number: F4031R      Date of Inspection: September 24, 2014

Materials		Material Class	Percent Asbestos	Hmgns Matrl #	Sampled Here?	Footage Sq/Ln/Jnts	Friable? Yes/No
<b><u>Building: Education Offices</u></b>		<b><u>Room: Office 4 - 10 x 16 x 9</u></b>					
<b>Floor:</b>	Carpet lt brown multi color with glue	MISC	Assumed	900		160 sq	No
<b>Floor:</b>	Concrete	NON	Non-Suspect				
<b>Baseboard:</b>	Carpet brown with glue	MISC	Assumed	901		52 ln	No
	<i>Comment: Used as a perimeter accent on all floors in all spaces.</i>						
<b>Walls:</b>	Drywall with texture (orange peel)	MISC	Assumed	902		351 sq	No
<b>Ceiling:</b>	2'x2' FCP with medium fissures	MISC	None Detected	1		160 sq	
<b>Wall:</b>	Concrete Masonry Unit	NON	Non-Suspect				
	<i>Comment: North wall</i>						
<b><u>Building: Education Offices</u></b>		<b><u>Room: Office 5 - 10 x 16 x 9</u></b>					
<b>Floor:</b>	Carpet lt brown multi color with glue	MISC	Assumed	900		160 sq	No
<b>Floor:</b>	Concrete	NON	Non-Suspect				
<b>Baseboard:</b>	Carpet brown with glue	MISC	Assumed	901		52 ln	No
	<i>Comment: Used as a perimeter accent on all floors in all spaces.</i>						
<b>Walls:</b>	Drywall with texture (orange peel)	MISC	Assumed	902		351 sq	No
<b>Ceiling:</b>	2'x2' FCP with medium fissures	MISC	None Detected	1		160 sq	
<b>Wall:</b>	Concrete Masonry Unit	NON	Non-Suspect				
	<i>Comment: North wall</i>						



# ***HAZARD MANAGEMENT SERVICES, INC.***

## **Abbreviations**

The following list includes most of the abbreviations you may find within this report.

<b><u>ACT:</u></b>	<b>Acoustic Ceiling/Wall Tile</b>
<b><u>B-I-I:</u></b>	<b>Blown-In-Insulation</b>
<b><u>BLR:</u></b>	<b>Boiler</b>
<b><u>C'Ing</u></b>	<b>Ceiling</b>
<b><u>Carp:</u></b>	<b>Carpet</b>
<b><u>Carp&amp;Mast</u></b>	<b>Carpet and Mastic</b>
<b><u>Bsbrd&amp;Glue</u></b>	<b>Baseboard and Glue</b>
<b><u>DIP:</u></b>	<b>Drop In Panel</b>
<b><u>DIT:</u></b>	<b>Drop In Tile</b>
<b><u>FCP:</u></b>	<b>False Ceiling Panel</b>
<b><u>FRP:</u></b>	<b>Fiberglass Reinforced Plastic</b>
<b><u>FG:</u></b>	<b>Fiberglass</b>
<b><u>HMR #:</u></b>	<b>Homogeneous Material Number</b>
<b><u>HTR:</u></b>	<b>Heater</b>
<b><u>LINO:</u></b>	<b>Linoleum</b>
<b><u>MISC</u></b>	<b>Miscellaneous</b>
<b><u>PW:</u></b>	<b>Pipe Wrap</b>
<b><u>S-O-C:</u></b>	<b>Sprayed-On Ceiling</b>
<b><u>SOFP:</u></b>	<b>Sprayed on Fire Proofing</b>
<b><u>S-O-W:</u></b>	<b>Sprayed-On Wall</b>
<b><u>SURF:</u></b>	<b>Surfacing</b>
<b><u>T-O-C:</u></b>	<b>Troweled-On Ceiling</b>
<b><u>T-O-W:</u></b>	<b>Troweled-On Wall</b>
<b><u>TSI:</u></b>	<b>Thermal System Insulation</b>
<b><u>VFT:</u></b>	<b>Vinyl Floor Tile</b>
<b><u>W &amp; C:</u></b>	<b>Walls and Ceilings</b>

# **HAZARD MANAGEMENT SERVICES, INC.**

## **Special Notes**

### **SPECIAL NOTE NO. 1 - DRYWALL/SHEETROCK**

Drywall and its components continue to present problems both for our clients and for us. The inconsistency of sample results indicates that even the EPA/AHERA method for sampling drywall is inadequate. Although three to fifteen or more drywall samples may have been collected at your site(s), the results may not be representative of what is present. Asbestos sometimes is found in the drywall itself, in its tape and/or joint compound or in the final texture coat applied to finish the appearance. It can be found in any combination in these materials. It can also be found in patching materials used to repair damaged drywall. Paint added to otherwise non-homogeneous materials can also produce inappropriate assumptions that all materials are the same.

To account for the variability in drywall construction we strongly advise that any substantial renovation project involving drywall be preceded by a comprehensive evaluation of the materials designated for handling.

### **SPECIAL NOTE NO. 2 - RENOVATIONS/DEMOLITIONS**

Please be aware that many possible asbestos-containing materials were specifically exempted from inspection and identification by the AHERA sampling protocol. These exempted materials included roofing materials, most exterior plasters, exterior window putty, exterior transite panels and shingles, some exterior thermal system insulation and a few other materials. AHERA also exempted heat resistant counter tops and transite blackboards and a few other materials found inside of buildings.

While these materials are exempted by AHERA, they are not exempted by Cal/OSHA or EPA's regulation in its "National Emission Standards for Hazardous Air Pollutants" (NESHAP). Therefore, any renovation activity involving these materials must be preceded by a sampling project to identify asbestos-containing materials which may be regulated by these agencies or the local Air Pollution Control District. You cannot rely on your AHERA reports to identify all of these additional materials.

### **SPECIAL NOTE NO. 3 - NEW MATERIALS AND BUILDINGS**

Materials installed since the previous inspection must be certified, in writing, as non-asbestos containing materials, sampled to test for asbestos content, or assumed to contain asbestos. This certification must be from the product manufacturer or the construction engineer on the project during which the new materials were installed. This certification must be placed in your management plan.

Buildings installed (portables) or constructed since October 12, 1988 must be certified to be asbestos-containing building material (ACBMs) free by the manufacturer (portables), architect or construction engineer, or they must be inspected for ACBMs. This certification must be placed in the management plan for the site at which the new building was installed or constructed.

New sites, built after October 12, 1988, require a Management Plan. If ACBM free certification letters are obtainable for all buildings at the new site, no inspection is required, although a Management Plan must still be written.

### **SPECIAL NOTE NO. 4 - Materials Containing Trace Amounts of Asbestos**

Materials containing trace amounts of asbestos are not covered by the AHERA regulations as the EPA does not consider them to be asbestos-containing materials. However, Cal/OSHA does consider materials containing trace amounts of asbestos (down to 0.1%) to be asbestos-containing, and any level of asbestos in a material must be considered a potential exposure hazard.

Materials listed as containing trace amounts of asbestos require special handling procedures - per Cal/OSHA and training for the employees working with these materials. Waste materials containing less than 1% asbestos must be "point counted" or handled as a hazardous waste.

**Date Printed: 10/10/2014**

# Homogeneous Material Records

## HAZARD MANAGEMENT SERVICES, INC.

Client: Central California Conference of 7th Day Adventist

Site: Central California 7th Day Adventist Education Ofc.

Project #:

F4031R

Building: Education Offices

Inspection Date: 9/24/2014

Material	Class	HMR	Sample Number(s)	Location	% Asbestos	Footage	Friable
2'x2' FCP with medium fissures	MISC	1	HMS-SDA-EDOF-F4031R-1A, 1B, 1C	Attic Plenum above drop-in ceiling panels - Floor	None Detected	1320 Square	Yes
2'x2' FCP with medium fissures	MISC	1	HMS-SDA-EDOF-F4031R-1A, 1B, 1C	Education Library - Ceiling	None Detected	400 Square	No
2'x2' FCP with medium fissures	MISC	1	HMS-SDA-EDOF-F4031R-1A, 1B, 1C	Hallway - Ceiling	None Detected	300 Square	No
2'x2' FCP with medium fissures	MISC	1	HMS-SDA-EDOF-F4031R-1A, 1B, 1C	Office 1 - Ceiling	None Detected	330 Square	No
2'x2' FCP with medium fissures	MISC	1	HMS-SDA-EDOF-F4031R-1A, 1B, 1C	Office 2 - Ceiling	None Detected	165 Square	No
2'x2' FCP with medium fissures	MISC	1	HMS-SDA-EDOF-F4031R-1A, 1B, 1C	Office 3 - Ceiling	None Detected	300 Square	No
2'x2' FCP with medium fissures	MISC	1	HMS-SDA-EDOF-F4031R-1A, 1B, 1C	Office 4 - Ceiling	None Detected	160 Square	No
2'x2' FCP with medium fissures	MISC	1	HMS-SDA-EDOF-F4031R-1A, 1B, 1C	Office 5 - Ceiling	None Detected	160 Square	No
Carpet It brown multi color with glue	MISC	900	NOT SAMPLED	Education Library - Floor	Assumed	400 Square	No
Carpet It brown multi color with glue	MISC	900	NOT SAMPLED	Hallway - Floor	Assumed	300 Square	No
Carpet It brown multi color with glue	MISC	900	NOT SAMPLED	Office 1 - Floor	Assumed	330 Square	No
Carpet It brown multi color with glue	MISC	900	NOT SAMPLED	Office 2 - Floor	Assumed	165 Square	No
Carpet It brown multi color with glue	MISC	900	NOT SAMPLED	Office 3 - Floor CMU assumed behind drywall on east and north wall	Assumed	300 Square	No

Date Printed: 10/10/2014

# Homogeneous Material Records

## HAZARD MANAGEMENT SERVICES, INC.

Client: Central California Conference of 7th Day Adventist

Site: Central California 7th Day Adventist Education Ofc.

Project #: F4031R

Building: Education Offices

Inspection Date: 9/24/2014

Material	Class	HMR	Sample Number(s)	Location	% Asbestos	Footage	Frangible
Carpet It brown multi color with glue	MISC	900	NOT SAMPLED	Office 4 - Floor	Assumed	160 Square	No
Carpet It brown multi color with glue	MISC	900	NOT SAMPLED	Office 5 - Floor	Assumed	160 Square	No
Carpet brown with glue	MISC	901	NOT SAMPLED	Education Library - Baseboard	Assumed	80 Linear	No
Carpet brown with glue	MISC	901	NOT SAMPLED	Hallway - Baseboard	Assumed	112 Linear	No
Carpet brown with glue	MISC	901	NOT SAMPLED	Office 1 - Baseboard	Assumed	74 Linear	No
Carpet brown with glue	MISC	901	NOT SAMPLED	Office 2 - Baseboard	Assumed	52 Linear	No
Carpet brown with glue	MISC	901	NOT SAMPLED	Office 3 - Baseboard	Assumed	70 Linear	No
Carpet brown with glue	MISC	901	NOT SAMPLED	Office 4 - Baseboard	Assumed	52 Linear	No
Carpet brown with glue	MISC	901	NOT SAMPLED	Office 5 - Baseboard	Assumed	52 Linear	No
Drywall with texture (orange peel)	MISC	902	NOT SAMPLED	Hallway - Walls	Assumed	810 Square	No
Drywall with texture (orange peel)	MISC	902	NOT SAMPLED	Office 1 - Walls/Solffit/Dividing wall	Assumed	594 Square	No
Drywall with texture (orange peel)	MISC	902	NOT SAMPLED	Office 2 - Walls	Assumed	468 Square	No
Drywall with texture (orange peel)	MISC	902	NOT SAMPLED	Office 3 - Walls	Assumed	630 Square	No
Drywall with texture (orange peel)	MISC	902	NOT SAMPLED	Office 4 - Walls	Assumed	351 Square	No

# Homogeneous Material Records

## HAZARD MANAGEMENT SERVICES, INC.

Client: Central California Conference of 7th Day Adventist

Site: Central California 7th Day Adventist Education Ofc.

Project #: F4031R

Building: Education Offices

Inspection Date: 9/24/2014

Material	Class	HMR	Sample Number(s)	Location	% Asbestos	Footage	Friable
Drywall with texture (orange peel)	MISC	902	NOT SAMPLED	Office 5 - Walls	Assumed	351 Square	No
Drywall with knockdown texture	MISC	903	NOT SAMPLED	Education Library - Walls	Assumed	720 Square	No
Fiberboard	MISC	904	NOT SAMPLED	Hallway - Wall	Assumed	54 Square	No
Baseboard, 4" Vinyl grey with mastic	MISC	906	NOT SAMPLED	Education Library - Baseboard At northeast corner	Assumed	7 Linear	No
Concrete	NON	0	NOT SAMPLED	Various Locations Plenum above drop-in ceiling panels	Non-Suspect		
Concrete Masonry Unit	NON	0	NOT SAMPLED	Various Locations Plenum above drop-in ceiling panels	Non-Suspect		
Concrete/dirt	NON	0	NOT SAMPLED	Exterior - Ground	Non-Suspect		No
Fiberglass	NON	0	NOT SAMPLED	Attic Plenum above drop-in ceiling panels - Ducts	Non-Suspect		No
Metal	NON	0	NOT SAMPLED	Attic Plenum above drop-in ceiling panels - Beams/Pipes	Non-Suspect	0	No



# Bulk Asbestos Analysis

(EPA Method 600/R-93-116, Visual Area Estimation)

Hazard Mgmt Svcs-Fresno/Bakersfield  
Harry Stevens  
Fresno Location  
371 E. Bullard Ave., Ste. 109  
Fresno, CA 93710

Client ID: 1636  
Report Number: B196287  
Date Received: 09/25/14  
Date Analyzed: 09/25/14  
Date Printed: 09/25/14  
First Reported: 09/25/14

Job ID/Site: F4031R - Central California Conference of 7th Day Adventist, Central California  
Conference of 7th Day Adventist Education Ofc.  
Date(s) Collected: 09/24/2014

FALI Job ID: 1636  
Total Samples Submitted: 3  
Total Samples Analyzed: 3

Sample ID	Lab Number	Asbestos Type	Percent in Layer	Asbestos Type	Percent in Layer	Asbestos Type	Percent in Layer
HMS-SDA-EDOF-F4031R-1A	11564188						
Layer: Beige Fibrous Material			ND				
Layer: Paint			ND				
Total Composite Values of Fibrous Components:		Asbestos (ND)					
Cellulose (40 %) Fibrous Glass (40 %)							
HMS-SDA-EDOF-F4031R-1B	11564189						
Layer: Beige Fibrous Material			ND				
Layer: Paint			ND				
Total Composite Values of Fibrous Components:		Asbestos (ND)					
Cellulose (40 %) Fibrous Glass (40 %)							
HMS-SDA-EDOF-F4031R-1C	11564190						
Layer: Beige Fibrous Material			ND				
Layer: Paint			ND				
Total Composite Values of Fibrous Components:		Asbestos (ND)					
Cellulose (40 %) Fibrous Glass (40 %)							

Tad Thrower, Laboratory Supervisor, Hayward Laboratory

Note: Limit of Quantification ('LOQ') = 1%. 'Trace' denotes the presence of asbestos below the LOQ. 'ND' = 'None Detected'.

Analytical results and reports are generated by Forensic Analytical Laboratories Inc. (FALI) at the request of and for the exclusive use of the person or entity (client) named on such report. Results, reports or copies of same will not be released by FALI to any third party without prior written request from client. This report applies only to the sample(s) tested. Supporting laboratory documentation is available upon request. This report must not be reproduced except in full, unless approved by FALI. The client is solely responsible for the use and interpretation of test results and reports requested from FALI. Forensic Analytical Laboratories Inc. is not able to assess the degree of hazard resulting from materials analyzed. FALI reserves the right to dispose of all samples after a period of thirty (30) days, according to all state and federal guidelines, unless otherwise specified. All samples were received in acceptable condition unless otherwise noted.

# BULK Material Analysis Request Form

Hazard Management Services, Inc.

Fresno  
371 E. Bullard Ave. Suite 109  
Fresno, CA 93710-5217  
(559) 436 - 0277  
FAX: (559) 436 - 0279

Date Submitted: 09/24/14  
Contact: Harry Stevens  
Collected By: Harry Stevens  
Date(s) Collected: 09/24/14

Analysis Requested: PLM with Dispersion Staining  
Turn Around Time: 24 HR  
Laboratory: Forensic Analytical, Inc.  
Special Instructions: Please email hstevens@hazmanage.com with results, thanks.  
Project ID / Job No: F4031R  
Bill to: Hazard Management Services, Inc.

Job ID: Central California Conference of 7th Day Adventist  
Job Site: Central California 7th Day Adventist Education Ctr.

Sample ID	Material Description / Location
HMS-SDA-EDOF-F4031R-1A	2'x2' drop-in ceiling panels Education Offices, Education Library, East side center
HMS-SDA-EDOF-F4031R-1B	2'x2' drop-in ceiling panels Education Offices, Hallway, Southeast corner
HMS-SDA-EDOF-F4031R-1C	2'x2' drop-in ceiling panels Education Offices, Office 1, East side at north soffit

Submitted By:

*[Signature]*

Date Submitted:

9/24/14

Submitted Via:

Fed Ex

Received By:

*[Signature]*

Date Received:

1/1

Received Via:

Up

09-25-14A10:47 RCVD

Date Printed: 9/24/2014

# HAZARD MANAGEMENT SERVICES, INC.

## PHYSICAL AND HAZARD ASSESSMENT OF FRIABLE ACBM OR FRIABLE ASSUMED ACBM (SEC. 763.93) (FORM C)

DISTRICT	Central California Conference of 7th Day Adventist	CDS CODE
SCHOOL	Central CA 7th Day Adventist Education Ofc.	SCHOOL PHONE NUMBER (559) 347 - 2000
ADDRESS	2820 Willow Avenue Clovis, CA 93612	
BUILDING NAME	INSPECTION DATE September 24, 2014	
FUNCTIONAL SPACE	LINE NO. FROM FORM B	
TYPE OF FRIABLE ACBM		

1. **CONDITION OF ACBM** (Overall Rating)

2. **POTENTIAL FOR DISTURBANCE** (Overall Rating)

3. **HAZARD ASSESSMENT** (Combine Ratings From Items 1 and 2 and Check Appropriate Box)

CONDITION OF ACBM	POTENTIAL FOR DISTURBANCE		
	LOW	MODERATE	HIGH
GOOD	1	2	3
DAMAGED	4	5	6
SIGNIFICANTLY DAMAGED	7	7	7

4. **RECOMMENDED RESPONSE ACTION(S) AND COST(S)**

RESPONSE ACTION	ESTIMATED COSTS
<input type="checkbox"/> A. OPERATION AND MAINTENANCE .....	\$
<input type="checkbox"/> B. REPAIR .....	\$
<input type="checkbox"/> C. ENCAPSULATION .....	\$
<input type="checkbox"/> D. ENCLOSURE .....	\$
<input type="checkbox"/> E. REMOVAL .....	\$
<b>Total Cost</b>	<b>\$</b>

5. **NARRATIVE OF RECOMMENDED RESPONSE**

(Attach Additional Sheets If Necessary)

SCHEDULE	
START	FINISH

Comments:

NO RESPONSE ACTION NECESSARY.



OPERATIONS AND MAINTENANCE PROGRAM  
(FORM D)

LOCAL EDUCATION AGENCY				COUNTY	
Central California Conference of 7th Day Adventist				Fresno	
SCHOOL NAME				SCHOOL PHONE NUMBER	
Central CA 7th Day Adventist Education Ofc				(559) 347-2000	
ADDRESS	(Number)	(Street)	(City)	(State)	(Zip)
2820 Willow Avenue			Clovis	CA	93612
CCS CODE*	SCHOOL ENROLLMENT*		NO. SCHOOL EMPLOYEES*		NO. BUILDINGS AT SCHOOL
	0		26		1

For each area where friable ACBM is present, assumed to be present, or is about to become present, write an operations and maintenance (O & M) program.

This O & M program must be developed for the entire school. The program must describe worker protection, initial and additional cleaning programs, building occupant protection (access control, signs, control of air movement, work practices, areacleaning, disposal methods), design and performance of other than small-scale, short-duration maintenance activities, and activities associated with minor and major fiber release episodes (Sec. 763.91).

IMPORTANT

Use Forms E through H to describe specific elements of this program. Use additional sheets when necessary.

INITIAL CLEANING:

Custodial Staff should:

Steam-clean all carpets throughout the building or vacuum them with a High Efficiency Particulate Air (HEPA)-filtered vacuum cleaner, but never with a conventional vacuum cleaner. Spray vacuum cleaner bags with water before removal and discard in sealed plastic bags according to EPA regulations for removal and disposal of asbestos. Discard vacuum filters in a similar manner.

HEPA-vacuum all curtains and books. Discard vacuum bags and filters in sealed plastic bags according to EPA regulations for disposal of asbestos waste.

Mop all non-carpeted floors with wet mop-s. Wipe all shelves and other horizontal surfaces with damp cloths. Use a mist spray bottle to keep cloths damp. Discard cloths and mop heads in sealed plastic bags according to EPA regulations for disposal of asbestos waste.

## MONTHLY CLEANING:

### Custodial Staff should:

Spray with water any debris found near surfacing ACM and place the debris in plastic bags using a dust pan. Rinse the pan with water in a utility sink. Report presence of debris immediately to the O&M Program Coordinator.

HEPA-vacuum all carpets.

Wet-mop all other floors and wipe all other horizontal surfaces with damp cloths.

Dispose of all debris, filters, mop heads, and cloths in plastic bags according to EPA regulations for disposal of asbestos waste.

The response action for any maintenance activities disturbing friable ACBM, other than small-scale, short-duration maintenance activities, shall be designed by persons accredited to design response actions and conducted by persons accredited to conduct response actions.

The local education agency shall ensure that the procedures described below are followed in the event of a minor fiber release episode (i.e., the falling or dislodging of 3 square or linear feet or less of friable ACBM):

- (1) Thoroughly saturate the debris using wet methods.
- (2) Clean the area with HEPA-vacuum or steam-clean carpets, HEPA-vacuum or wet-clean all other floors and all other horizontal surfaces.
- (3) Place the asbestos debris in a sealed, leak-tight container.
- (4) Repair the area of damaged ACM with materials such as asbestos-free spackling, plaster, cement, or insulation, or seal with latex paint or an encapsulant, or immediately have the appropriate response action implemented as required by Sec. 763.90.

The local education agency shall ensure that the procedures described below are followed in the event of a major fiber release episode (i.e., the falling or dislodging of more than 3 square or linear feet of friable ACBM):

- (1) Restrict entry into the area and post signs to prevent entry into the area by persons other than those necessary to perform the response action.
- (2) Shut off or temporarily modify the air-handling system to prevent the distribution of fibers to other areas in the building.
- (3) The response action for any major fiber release episode must be designed by persons accredited to design response actions and conducted by persons accredited to conduct response actions.

## A GUIDE FOR REDUCING ASBESTOS EXPOSURE

### PURPOSE

Your school building contains materials which contain asbestos and may release fibers into the air. Breathing asbestos fibers is dangerous. This fact sheet tells how to reduce exposure to asbestos fibers. Please read it carefully.

### PROTECTING YOURSELF FROM ASBESTOS

Some of the friable building materials in your school contain asbestos. Friable asbestos-containing materials crumble easily and release fibers into the air. Breathing these fibers may cause cancer and other diseases. The more asbestos you breathe, the greater your chances are of getting disease. You can take precautions that will reduce or eliminate the risk of being exposed to asbestos.

Find out from your supervisor where these friable asbestos-containing materials are in your building. Do not touch or disturb them unless you have to. If you must handle an asbestos-containing material, first lightly spray it with water, (EPA recommends using water which contains wetting agents, if they are available.) Wet asbestos-containing material will not release as many fibers.

Even if friable asbestos-containing materials are not disturbed, they may release asbestos fibers, which will fall slowly to the floor. If you are cleaning in areas which contain these materials, do not use a broom: it will stir the fibers into the air. Do not use a vacuum cleaner unless it is equipped with a High Efficiency Particulate Absolute filter. The fibers are so small they can pass through an ordinary vacuum cleaner and out into the room.

When cleaning in areas which contain friable asbestos-containing materials, use dampened mops and dustcloths. Dampened mops and dustcloths will hold the fibers much better than dry mops and dustcloths, and will reduce the number of fibers put back into the air. It is best to use mops with disposable heads and to throw away the mop head after use. Otherwise fibers will be released as the mop dries. Use either lightly dampened mops or cloths or a vacuum with a High Efficiency Particulate Absolute filter to clean areas where wet mopping cannot be used (such as carpeting or hardwood floors).

Clean tables and chairs in the area with damp cloths. Do not dust them with brushes or with dry cloths, and do not vacuum them.

After you use the mop heads and cloths, put them in a plastic bag while they are still wet. Dislodged materials should also be placed in plastic bags for disposal.

### A LIST OF IMPORTANT POINTS TO REMEMBER

1. Do not handle or disturb friable asbestos containing materials unless necessary.
2. If you must handle asbestos-containing materials, wet them first.
3. If you must disturb asbestos (for example, to repair a light), see your supervisor before starting work. Then:
  - a. Place a plastic dropcloth below the work area.
  - b. Spray asbestos-containing material with water before you disturb it.
  - c. Make sure that only those persons who are necessary for the job are in the area.
  - d. Put all the asbestos you remove into a heavy plastic bag. Seal the bag and discard it.
  - e. After the job, clean all the ladders and tools you used with a wet cloth.
  - f. Roll up the dropcloth carefully and put it in a plastic bag. Discard the bag.
  - g. Clean the floor below the work area with a wet mop.
  - h. Put the mop head and the cloth used to clean the ladders in a plastic bag while they are still wet, seal the bag, and discard it.
4. If you must disturb or remove large sections of asbestos-containing material, see your supervisor before you begin. The National Institute for Occupational Safety and Health recommends that a respirator approved for toxic dusts be worn during such work.

You should make arrangements to turn off the school's ventilation system if you are disturbing or removing large sections of asbestos-containing material. The ventilation system should remain off until the work is completed and the area has been cleaned.

PERIODIC SURVEILLANCE PLAN  
(FORM E)

LOCAL EDUCATION AGENCY				COUNTY	
Central California Conference of 7th Day Adventist				Fresno	
SCHOOL NAME				SCHOOL PHONE NUMBER	
Central CA 7th Day Adventist Education Ofc				(559) 347 - 2000	
ADDRESS		(Number)	(Street)	(City)	(State)
2820 Willow Avenue				Clovis	CA
CDS CODE*		SCHOOL ENROLLMENT*	NO. SCHOOL EMPLOYEES*		NO. BUILDINGS AT SCHOOL
		0	26		1

This plan must include a periodic surveillance of each building with friable ACBM and nonfriable ACBM at least every six months. The person performing periodic surveillance must receive two hours general training and 14 hours of additional training if work performed might disturb asbestos. The person will record the date, the area of inspection, the inspector's name, the description of any changes of the materials, and also visual inspect the areas (Sec. 763.92).

Persons dealing with disturbed ACBM must have at least 16 hours of training in dealing and handling ACM. Inspection must be done every six months or by July 9, 1989 and every six months there after with a three year inspection by a certified state inspector or by July 9, 1992.

PERIODIC INSPECTION

Building inspectors should:

Inspect all ACM materials for damage or deterioration at least twice a year and report findings to the O&M program coordinator.

Investigate the source of debris found by the custodial staff.

Custodial and maintenance staff should:

Inform the O&M program coordinator when damage to ACM is observed or when debris is cleaned up.

\* NOTE the attached: "Reassessment of Asbestos-Containing Materials"  
"Training and Periodic surveillance".

## REASSESSMENT OF ASBESTOS-CONTAINING MATERIALS

Location of asbestos-containing material(s) (address, building, room(s), or general description: \_\_\_\_\_

\_\_\_\_\_  
\_\_\_\_\_  
\_\_\_\_\_  
\_\_\_\_\_  
\_\_\_\_\_

Type of asbestos-containing material(s):

1. Sprayed or troweled on ceilings or walls.
2. Sprayed or troweled on structural members.
3. Insulation on pipes, tanks, or boilers.
4. Other (describe): \_\_\_\_\_

\_\_\_\_\_  
\_\_\_\_\_

### Abatement Status:

1. The material has been encapsulated \_\_\_\_\_, enclosed \_\_\_\_\_, neither \_\_\_\_\_.

### Assessment:

1. Evidence of physical damage: \_\_\_\_\_
  2. Evidence of water damage: \_\_\_\_\_
  3. Evidence of delamination or other deterioration: \_\_\_\_\_
  4. Degree of accessibility of the material: \_\_\_\_\_
  5. Degree of activity near the material: \_\_\_\_\_
  6. Location in an air plenum, air shaft, or air stream: \_\_\_\_\_
  7. Other observations (including the condition of the encapsulant or enclosure, if any): \_\_\_\_\_
- \_\_\_\_\_  
\_\_\_\_\_  
\_\_\_\_\_

Signed: \_\_\_\_\_ Date: \_\_\_\_\_  
(Evaluator)

**Sec. 763.92 Training and periodic surveillance.**

(a) *Training.* (1) The local education agency shall ensure, prior to the implementation of the O&M provisions of the management plan, that all members of its maintenance and custodial staff (custodians, electricians, heating/air conditioning engineers, plumbers, etc.) who may work in a building that contains ACBM receive awareness training of at least 2 hours, whether or not they are required to work with ACBM. New custodial and maintenance employees shall be trained within 60 days after commencement of employment. Training shall include, but not be limited to:

- (i) Information regarding asbestos and its various uses and forms.
- (ii) Information on the health effects associated with asbestos exposure.
- (iii) Locations of ACBM identified throughout each school building in which they work.
- (iv) Recognition of damage, deterioration, and delamination of ACBM.
- (v) Name and telephone number of the person designated to carry out general local education agency responsibilities under Sec. 763.84 and the availability and location of the management plan.

(2) The local education agency shall ensure that all members of its maintenance and custodial staff who conduct any activities that will result in the disturbance of ACBM shall receive training described in paragraph (a)(1) of this section and 14 hours of additional training. Additional training shall include, but not be limited to:

- (i) Descriptions of the proper methods of handling ACBM.
- (ii) Information on the use of respiratory protection as contained in the EPA/NIOSH *Guide to Respiratory Protection for the Asbestos Abatement Industry*, September 1986.
- (iii) Hands-on training in the use of respiratory protection, other personal protection measures, and good work practices.

(3) Local education agency maintenance and custodial staff who have attended EPA-approved asbestos training or received equivalent training for O&M and periodic surveillance activities involving asbestos shall be considered trained for the purposes of this section.

(b) *Periodic surveillance.* (1) At least once every 6 months after a management plan is in effect, each local education agency shall conduct periodic surveillance in each building that it leases, owns, or otherwise uses as a school building that contains ACBM or is assumed to contain ACBM.

(2) Each person performing periodic surveillance shall:

(i) Visually inspect all areas that are identified in the management plan as ACBM or assumed ACBM.

(ii) Record the date of the surveillance, his or her name, and any changes in the condition of the material.

(iii) Submit to the person designated to carry out general local education agency responsibilities under Sec. 763.84 a copy of such record for inclusion in the management plan.

REINSPECTION PLAN  
(FORM F)

LOCAL EDUCATION AGENCY				COUNTY	
Central California Conference of 7th Day Adventist				Fresno	
SCHOOL NAME				SCHOOL PHONE NUMBER	
Central CA 7th Day Adventist Education Ofc				(559) 347 - 2000	
ADDRESS		(Number)	(Street)	(City)	(State) (Zip)
2920 Willow Avenue				Clovis	CA 93612
CCS CODE*	SCHOOL ENROLLMENT*		NO. SCHOOL EMPLOYEES*		NO. BUILDINGS AT SCHOOL
	0		26		1

The plan must meet the reinspection requirements of Section 763.85. This plan will include a reinspection every three years by an accredited inspector.

The school must be reinspected in three years or by July 9, 1992 by a Certified Inspector, and every six months by a local inspector, documenting the conditions and state of ACM. Any changes must be documented, giving date of inspection and name of inspector.

\* Note: Please note the following page, REINSPECTION.

## REINSPECTION;

1. At least once every 3 years after a management plan is in effect, each local education agency shall conduct a reinspection of all friable and nonfriable known or assumed ACBM in each school building that they lease, own, or otherwise use as a school building.
2. Each inspection shall be made by an accredited inspector.
3. For each area of a school building, each person performing a reinspection shall:

Visually reinspect, and reassess, under Sec. 763.88, the condition of all friable known or assumed ACBM.

Visually inspect material that was previously considered nonfriable ACBM and touch the material to determine whether it has become friable since the last inspection.

Identify and homogeneous areas with material that has become friable since the last inspection.

For each homogeneous area of newly friable material that is already assumed to be ACBM, bulk samples may be collected and submitted for analysis in accordance with Sec. 763.86 and 763.87.

Assess, under Sec. 763.88, the condition of the newly friable material in areas where samples are collected, and newly friable materials in areas that are assumed to be ACBM.

Reassess, under Sec. 763.88, the condition of friable known or assumed ACBM previously identified.

Record the following and submit to the person designated under Sec. 763.84 a copy of such record for inclusion in the management plan within 30 days of the reinspection:

1. The date of the reinspection, the name and signature of the person making the reinspection, State of accreditation, and if applicable, his or her accreditation number, and any changes in the condition of known or assumed ACBM.
2. The exact locations where samples are collected during the reinspection, a description of the manner used to determine sampling locations, the name and signature of each accredited inspector who collected the samples, State of accreditation, and, if applicable, his or her accreditation number.
3. Any assessments or reassessments made of friable material, the name and signature of the accredited inspector making the assessments, State of accreditation, and, if applicable, his or her accreditation number.



PARENT/EMPLOYEE NOTIFICATION PROGRAM  
(FORM G)

LOCAL EDUCATION AGENCY				COUNTY	
Central California Conference of 7th Day Adventist				Fresno	
SCHOOL NAME				SCHOOL PHONE NUMBER	
Central CA 7th Day Adventist Education Ofc				(559) 347 - 2000	
ADDRESS	(Number)	(Street)	(City)	(State)	(Zip)
2820 Willow Avenue			Clovis	CA	93612
CES CODE*	SCHOOL ENROLLMENT*		NO. SCHOOL EMPLOYEES*		NO. BUILDINGS AT SCHOOL
	0		76		1

In the discussion section of this form, information should be included that describes steps taken to inform workers and building occupants, or their legal guardians, about inspections, response actions, and post response action activities, including periodic reinspection and surveillance activities that are planned or in progress. Notifications must be made once each school year (Sec. 763.84).

Send a letter similar to the one enclosed to all parents, teachers, workers, and or legal guardian of all students. This letter must go out annually. A signed copy and every updated copy of this letter needs to be attached to this management plan. If your school does not contain ACBM this letter still needs to be sent out annually. Inform them that the school has been inspected for asbestos according with EPA regulations and a report is located at a centralized location at the administration office of the school and at the LEA's office for all to review. (Please note the attached form "Notice to School Employees".) This notification must remain until all ACBM is removed from the school. Please make sure your staff; teachers, workers, & custodial persons are aware of this report and where it can be found for review.

Dear Parents, Teachers, Workers, or Legal Guardians:

Our school has been inspected for asbestos containing building material (ACBM) according with EPA regulations. If you have any questions, please come in at your convenience and look over the management plan which is located at the administrative office here at the school and at the LEA's office in Clovis.

This report and all records regarding AHERA activities will be maintained at a centralized location and will be made available to you so that you can more fully understand what plans or actions are in progress concerning: inspections, response actions, post response action activities, periodic reinspection and surveillance activities.

Thank you for your continual support in christian education.

\_\_\_\_\_  
(Principal)

## NOTICE TO SCHOOL EMPLOYEES

In accordance with EPA regulations, this school has been inspected for friable (easily crumbled) and non-friable materials which contain asbestos. Friable asbestos-containing material may cause health problems.

**Friable and non-friable asbestos-containing material is present in**

\_\_\_\_\_  
(Name of School)

A record of the inspection, a diagram of the location(s) of friable and non-friable asbestos-containing materials, and a copy of relevant EPA regulations are available in:

\_\_\_\_\_  
(building)

\_\_\_\_\_  
(room)

For further information, interested persons should call 800-424-9065 (554-1404 in the Washington, DC area).

Signed:

\_\_\_\_\_  
(Name)

\_\_\_\_\_  
(title)

\_\_\_\_\_  
Date

EVALUATION OF RESOURCES NEEDED  
(FORM H)

LOCAL EDUCATION AGENCY				COUNTY	
Central California Conference of 7th Day Adventist				Fresno	
SCHOOL NAME				SCHOOL PHONE NUMBER	
Central CA 7th Day Adventist Education Ofc				(559) 347 - 2000	
ADDRESS	(Number)	(Street)	(City)	(State)	(Zip)
2820 Willow Avenue			Clovis	CA	93612
CDS CODE	SCHOOL ENROLLMENT		NO. SCHOOL EMPLOYEES	NO. BUILDINGS AT SCHOOL	
	0		26	1	

estimated total cost of response actions \$ 30,625.00	estimated total cost of inspections \$ 1168.80	estimated total cost of management plan \$ 1558.40
---	--	--

Discussion should include such information as funding required, equipment, facilities, support personnel (Sec. 763.93).

FUNDING REQUIRED

40 CFR Part 763 Final Rule and Notice:

IV. Economic impact

The cost of an asbestos inspection is estimated to range from \$1,144 to \$1,627 per school for schools with both surfacing and thermal systems insulation ACM. This cost varies depending upon the size of the school, the amount and type of ACM contained in the school, and the type of professional doing the work. The costs of sampling and analysis if friable materials are found will depend upon the number of samples taken and analyzed. Costs of analysis are estimated to range from \$25 to \$47 per sample. Assuming the average school has an analyze 20 samples, the cost of analysis will be \$500 to \$940 per school. The cost of mapping ACM is estimated to range from \$110 to over \$270 per school.

The cost of developing a management plan if asbestos-containing surfacing ACM or thermal systems insulation ACM is present is estimated to range from \$1,025 for an average-size public primary school to \$1,420 for an average size public secondary school. These estimates are weighted average of the costs of plans developed by trained school personnel and by outside consultants.

The cost of training for school employees involves a variety of factors ranging from course and accreditation exam fees to the possible expenses for any out of town travel required for the training. The estimated course fee for a 2-hour awareness session required of all school maintenance employees in schools with ACM is approximately \$50 per person., The additional 14 hours of training for school maintenance workers who may come in contact with asbestos in doing minor repair and maintenance work that disturbs asbestos is estimated to cost \$250. A fee of \$420 is estimated for the 24 hours of training required for the certification of asbestos abatement workers doing more than just minor repair and small glove-bag removal jobs. The fee for the 40-hour training course and certification required for asbestos abatement contractors is estimated to be \$640.

Response action costs depend primarily on the condition of the asbestos in a school and to a lesser extent on many other factors. In general, for surfacing ACM in all but the significantly damaged category, it is likely that the primary response action undertaken by a school will be special O&M activities. Use of O&M activities would likely continue until or unless the ACM deteriorates to a "significantly damaged" condition. The annual cost of a special O&M program (excluding acquisition of special equipment) is estimated to range from \$3,800 for a typical public primary school to \$5,100 for a typical public secondary school. Initial cleaning costs are expected to range from \$950 to \$1,400.

The cost of removal depends upon many factors including size of the project. The estimated cost of removal for a 4,000 sq. ft. project in which surfacing material is removed would be approximately \$51,300. The cost of removal for a 900 sq. ft. boiler wrap project is estimated to be approximately \$30,900. The total discounted costs of response actions were estimate assuming schools undertake a combination of response actions that depend on the condition of the ACM.

#### EQUIPMENT

For handling small removal jobs of 32 sq. ft. or less or cleaning of ACM, the following will be needed:

- Gloves
- Glove bags (depending on the type of removal)
- Tyvecs (disposable coveralls)
- Negative air mask respirator
- Nepa-filter vacuum cleaner
- Plastic sheeting
- Plastic bags ("Danger-Asbestos")

For more information about Asbestos safety order:

ENVIRONMENTAL PROTECTION AGENCY (EPA)

General Asbestos Info: Library: (415) 974-8076

Technical Assistance: Schools: (415) 974-7551, -7056

NESHAP for removal & demolition regulations, for contractors, building owners:

1. Local Air Pollution Control (delegated local authority for NESHAP regs.)

Bay Area: (F.S. Alameda, Contra Costa, Marin, Napa, San Mateo, Santa Clara, Sonoma & Solano): (415) 771-6000

Other counties: "name of county Air Pollution Control District".

2. Emergency Notifications: Local APCD (above) and Janet Crawford, EPA NESHAPs Coordinator: (415) 974-7633

CONSULTANT list: 1. In phone books under "Industrial Hygienists of Asb. Consultants"

2. By calling American Lung Association for their list

a. San Francisco Office: (415) 543-4410

b. Los Angeles Office: (213) 935-5864

3. Listed in "American Indust. Hygiene Assoc. Journal" in January ;and July issues: (216) 762-7294

4. Pamphlet: ASBESTOS SAFETY EQUIPMENT

100 Gall Drive Suite #4

Novato, Ca. 94949 ph. (415) 892-9359

## FACILITIES

### Disposal Waste Dumps:

Berkeley: (415) 540-2043

Fresno: (209) 445-5938

Sacramento: (916) 739-3145

Contact Mr. Milton Thorman, (209) 291-7700, for information about the nearest drop sight for all your asbestos.

## SUPPORT PERSONNEL

PACIFIC ASBESTOS INFORMATION CENTER: UC Berkeley Ext. courses: (415) 643-7143

OSHA: Worker Protection, enforcement and Industrial Hygiene consultation:

Federal OSHA: Toll free general info: (800) 648-1003

CAL/OSHA: Clovers State employees only: gen. consultation: (415) 557-1946

AHERA; For management of AHERA regulations, to provide lists of accredited persons, to receive the Management plans: California: (916) 445-9327.

NESHAPS: National Emissions Standards for Hazardous Air Pollutants regulates the emission of asbestos fibers for handling of asbestos in most buildings, and the disposal of asbestos-containing waste. The EPA/NESHAPS must be notified before the beginning of any project of more than 160 sq. ft. or 260 linear feet. Notify by mail to Ms. Janet Crawford A-3-3, NESHAPS Coordinator, NESHAPS A-3-3. EPA Region 9, 215 Fremont St. S.F., CA., 94105.

Air pollution Control District (APCD): These local agencies have been delegated primary authority to enforce EPA/NASHAP regulations. Contact the nearest county agency for information and notification requirements for asbestos projects.  
BAAQMD: 415) 771-6000.

The following providers have either full or contingent approval in Region 9. Successful completion of either a fully approved course or a contingently approved course provides full accreditation for course attendees. Only if EPA subsequently withdrew contingent approval would future course offering not have EPA approval.

- \* ABMS/Excel Environ. Inc., Oakland, CA (415) 547-7144. Contingent approval: Workers; Contractor/Supervisors
- \* Center for Accelerated Learning, Vacaville, CA. (707) 446-7996. Contingent approval: Contractor/Supervisors; Workers.
- \* Insulators and Asbestos Industry of Northern California, Alameda, CA. (415) 522-7048.
- \* IT Corp., Wilmington, CA. (213) 830-1781. Contingent approval: Workers; Contractor/Supervisors
- \* Kelco, Fremont, CA. (415) 659-9751. Contingent approval: Workers.
- \* Med-Tox, Tusting CA. (714) 259-0620. Contingent approval; Inspector; Contractor/Supervisor; Workers.

\* Napier & Associates, Torrance, CA. (213) 644-1924. Contingent approval:  
Workers.

\* Pacific Asbestos Information Center, Berkeley Extension, CA. (415) 643-7143.  
Full approval: Inspector/Management planner; Contractor/Supervisor.

EPA-ACCREDITED COURSES FROM OTHER REGIONS AVAILABLE IN CALIFORNIA

Telephone providers for schedules and information.

\* Clayton Envir. Conslt.  
(415) 426-2600  
Inspector/Mgmt.Planner

\* Kaselaan & D'Angelo Assoc.  
(213) 324-6825  
Inspector/Mgmt.Planner

\* Critical Environmental  
Training, Texas:  
(800) 527-1830  
Contractor/Supervisor; Workers

\* Local 22, Texas  
Internt. Assoc. Of Heat & Frost  
(713) 473-0888  
Contractor/Supervisor, Workers

\* Environmental Instit., Texas  
(214) 553-8866  
Inspector/Mgmt. Planner  
Contractor/Supervisor

\* NAC (National Asb. Council)  
(404) 292-0629  
Workers

\* Hall-Kimbrell, Kansas  
(800) 364-2860  
Contractor/Supervisor,  
Workers, Project Designer

\* North West Envirocon, Or.  
(503) 659-8899  
Inspector/Mgmt.Planner

\* IPC, Illinois  
(312) 975-3495  
Workers

\* White Lung, Maryland  
(415) 668-2594  
(707) 839-9270  
Inspector/Mgmt.Planner

## RECORDKEEPING

### REQUIREMENT

---

All records shall be maintained in a centralized location in the administrative office of both the school and the local education agency as part of the management plan. For each homogeneous area where all ACBM has been removed, the local education agency shall ensure that such records are retained for 3 years after the next reinspection required under Sec. 763.85 or for an equivalent period.

For each preventive measure and response action taken for friable and nonfriable ACBM and friable and nonfriable suspected ACBM assumed to be ACM, the local education agency shall provide;

(1) A detailed written description of the measure or action, including methods used, the location where the measure or action was taken, reasons for selecting the measure or action, start and completion dates of the work, names and addresses of all contractors involved, and if applicable, their State of accreditation, and accreditation numbers, and if ACBM is removed, the name and location of storage or disposal site of the ACM.

(2) The name and signature of any person collecting any air sample required to be collected at the completion of certain response actions specified by Sec. 763.90, the locations where samples were collected, date of collection, the name and address of the laboratory analyzing the samples, the date of analysis, the results of the analysis, the method of analysis, the name and signature of the person performing the analysis, and a statement that the laboratory meets the applicable requirements of Sec. 763.90.

For each person required to be trained under Sec. 763.92 (a) 1 & 2, the local education agency shall provide the person's name and job title, the date that training was completed by that person, the location of the training, and the number of hours completed in such training.

For each time that periodic surveillance under Sec. 763.92 (b) is performed, the local education agency shall record the name of each person performing the surveillance, the date of the surveillance, and any changes in the conditions of the materials.

For each time that cleaning under Sec. 763.91 (c) is performed, the local education agency shall record the name of each person performing the cleaning, the date of such cleaning, the locations cleaned, and the methods used to perform such cleaning.

For each time that operations and maintenance activities under Sec. 763.91(d) are performed, the local education agency shall record the name of each person performing the activity, the start and completion dates of the activity, the locations where such activity occurred, a description of the activity including preventive measures used, and if ACBM is removed, the name and location of storage or disposal site of the ACM.

For each time that major asbestos activity under Sec. 763.91 (e) is performed, the local education agency shall provide the name and signature, State of accreditation, and if applicable, the accreditation number of each person performing the activity, the start and completion dates of the activity, the locations where such activity occurred, a description of the activity including preventive measures used, and if ACBM is removed, the name and location of storage or disposal site of the ACM.

For each fiber release episode under Sec. 763.91 (f), the local education agency shall provide the date and location of the episode, the method of repair, preventive measures or response action taken, the name of each person performing the work, and if ACBM is removed, the name and location of storage or disposal site of the ACM.



PERMIT APPLICATION FOR PERFORMING MAINTENANCE/RENOVATION WORK

1. Exact location of area involved (including building number, room number, location within room, etc.) \_\_\_\_\_  
\_\_\_\_\_
2. Description of work involved \_\_\_\_\_  
\_\_\_\_\_
3. Starting Date \_\_\_\_\_ Anticipated Completion Date \_\_\_\_\_
4. \* Approximate amount of asbestos present (linear feet, square feet, size of tank, etc.) \_\_\_\_\_  
\_\_\_\_\_
5. \* Asbestos control methods to be used (i.e., glove bag, HEPA vacuum, wet methods, etc.) \_\_\_\_\_  
\_\_\_\_\_
6. \* Protective equipment to be used (respirator, coveralls, etc.) \_\_\_\_\_  
\_\_\_\_\_
7. Name and telephone number/extension of supervisor. \_\_\_\_\_  
\_\_\_\_\_

TO BE FILLED OUT BY ASBESTOS PROGRAM MANAGER

Permit \_\_\_\_\_ Accepted \_\_\_\_\_ Rejected \_\_\_\_\_  
Signed \_\_\_\_\_ Print \_\_\_\_\_  
Permit Number \_\_\_\_\_  
Emergency Contact \_\_\_\_\_

Please return this form to:

Eslinger Enterprises  
9545 W. Hwy. 152  
Dos Palos, Ca. 93620

\* Note: These items may have to be filled out by an asbestos program manager.

# FIBER RELEASE EPISODE REPORT

1. Address, building, and room number(s) (or description of area) where episode occurred: \_\_\_\_\_  
\_\_\_\_\_  
\_\_\_\_\_  
\_\_\_\_\_  
\_\_\_\_\_
- 2 The release episode was reported by \_\_\_\_\_  
on \_\_\_\_\_ (date)
3. Describe the episode: \_\_\_\_\_  
\_\_\_\_\_  
\_\_\_\_\_  
\_\_\_\_\_  
\_\_\_\_\_  
\_\_\_\_\_  
\_\_\_\_\_  
\_\_\_\_\_  
\_\_\_\_\_  
\_\_\_\_\_
4. The asbestos-containing material was \_\_\_\_\_/ was not \_\_\_\_\_  
cleaned up according to approved procedures. Describe the cleanup:  
\_\_\_\_\_  
\_\_\_\_\_  
\_\_\_\_\_  
\_\_\_\_\_  
\_\_\_\_\_  
\_\_\_\_\_  
\_\_\_\_\_  
\_\_\_\_\_  
\_\_\_\_\_  
\_\_\_\_\_

Signed: \_\_\_\_\_  
(Asbestos Program Manager)

Date: \_\_\_\_\_